

Biditup! Live On-Site

AUCTION

**By Order of the Commonwealth of Kentucky Case #03-CI-145
and the Receiver in the Matter of:**

PERMCAST, LLC

Gray Iron Foundry & CNC Machine Shop

**Featuring: Late Model Dual Track Inductotherm Furnace,
Late Model Badger Shot Blast Machine, Molding Systems,
Heat Treat Furnaces, Pattern Shop, Lab Equipment & Rolling Stock**

Auction

Thursday, December 11th
Beginning at 10:30am, Eastern

Preview

Wednesday, December 10th
9am to 4pm and morning of sale

Location

1327 New Lair Road
Cynthiana, Kentucky



an industrial assets company

Biditup! Live On-Site

AUCTION

By Order of the Commonwealth of
Kentucky Case #03-CI-145
and the Receiver in the Matter of:

PERMCAST, LLC

Auction

Thursday, December 11th
Beginning at 10:30am, Eastern

Preview

Wednesday, December 10th
9am to 4pm & morning of sale

Location

1327 New Lair Road
Cynthiana, Kentucky

Directions

FROM THE CINCINNATI AIRPORT
(APPROX. 60 MILES FROM SITE)

From the Cincinnati Airport Take the 275 East to 75 South. From the 75 South Take Route 32 East. Stay on the 32 East into Cynthiana. Take Route 32 / Pike St. to New Lair / Church St. Turn Right on Church St. / New Lair. (Approx. 2 Miles to Plant on Left Side). Watch for Auction Signs.

Lodging

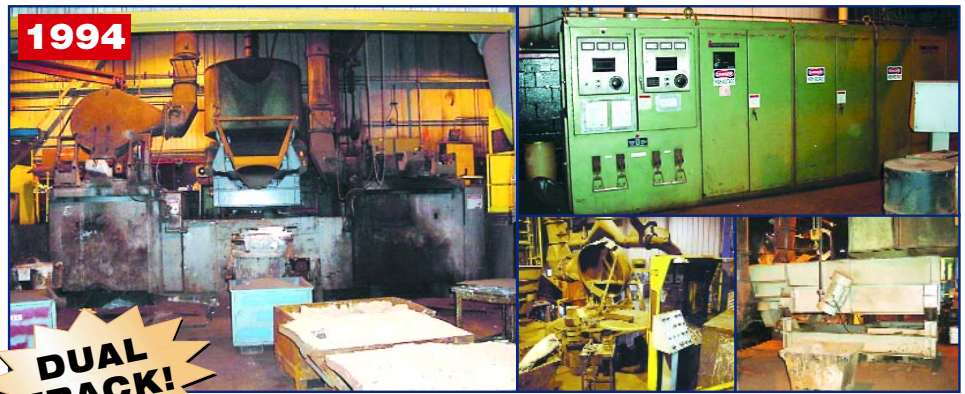
BEST WESTERN
(APPROX. 12 MILES FROM SITE)
2011 Alverson Drive,
Paris, KY 40361
859-987-0779

MOTEL 6
(APPROX. 19 MILES FROM SITE)
401 Cherry Blossom Way,
Georgetown, KY 40324
(502) 863-1166

SUPER 8 MOTEL
(APPROX. 20 MILES FROM SITE)
250 Shoney Drive,
Georgetown, KY 40324
(502) 863-4888



Melting, Ladles, Generator, Core Room



1994

DUAL TRACK!

INDUCTOTHERM DUAL TRAK MELTING SYSTEM, MDL. 1500-2R

MELTING

- 1- 1994 INDUCTOTHERM DUAL TRAK MELTING SYSTEM, MDL. 1500-2R, Including: 1500 KW 300 HZ Power Supply s/n 94B-23832-247-11 Power Supply, 2-3 Ton Hydraulic Tilting Steel Shell Coreless Induction Furnaces w/Hydraulic System, Inductotherm Water System, Inductotherm Swivel Type Oscillating Furnace Feeder, 1630 KW 12, 470 Volt Primary Transformer, Remote Operators Controls, Spare Furnace Coil, Less Than Two Years of Use on this System.
- 1- INDUCTOTHERM CHARGE SYSTEM, Including: (3) 11' Charge Feed Oscillating Conveyors, Each Mounted on Load Cell Weight Scale & 35' Oscillating Transfer Conveyor, Support Structure & Controls.
- 1- 50/40 TON BROWN BOVARI VERTICAL CHANNEL HOLDING FURNACE, MDL. IRV, s/n OP-51000-06 Equipped w/500 KW Power Supply, Water System, Hydraulic Tilting System & Controls.
- 2- 72" DIAMETER 25 TPH WATER WALLED CUPOLAS Equipped w/Common Charge Feeder w/Load Cell Scale & Common Skip Loader, Complete Pollution Controls System & Feed System, Falco #2 Copper Tuyeres Including (2) New.
- 1- ELECTRONITE DATACAST 2000 TEMPERATURE INDICATOR.
- 1- ELECTRONITE QUIKLAB 2 TEMPERATURE INDICATOR.



50/40 TON BROWN BOVARI VERTICAL CHANNEL HOLDING FURNACE, MDL. IRV

(6) LADLES

- 3- RIDING TYPE MONORAIL LADLE DELIVERY CARS Equipped w/28" Diameter X 36" Motorized Ladles.
- 1- 27" GEARED TEAPOT LADLE.
- 1- 26" X 38" GEARED DUCTILE LADLE.
- 1- 24" GEARED TEAPOT LADLE.

GENERATOR

- 1- 45 KW ONAN STANDBY GENERATOR, MDL. 45-0-EM-15R.



INDUCTOTHERM CHARGE SYSTEM



2 Available

HARRISON 2-STATION SHELL CORE MACHINES, MDL. 1616

Molding, Oven, Rolling Stock, Air Compressors, Air Dryers



PARTIAL VIEW OF COMPLETE LOST FOAM MOLDING LINE



500 LB. MARKLIFT SELF PROPELLED MANLIFT, MDL. 41-KB0790



QUINCY AIR COOLED 300HP SCREW TYPE AIR COMPRESSOR, MDL. QSI-1500

MOLDING

- 1- COMPLETE LOST FOAM MOLDING LINE, Including: Fill Station, (30) 40" Diameter X 44" Mold Boxes, Complete 4 Line Conveyor System w/Pushers, (3) Transfer Stations, Mold Dump Station, (2) G/K 34" X 17" Sand Cooling Conveyors w/Fluidized Beds, Dependable 4" Sand Transporter, Hydraulic System & PLC Controls.
- 1- 48" X 48" LOST FOAM SLURRY MIXER, Foam Press w/ALLEN BRADLEY PLC Controls, (2) Nash Mdl. C11002 Vacuum Pumps, 1983 Cleaver Brooks Mdl. CB200-150 Package Boiler.
- 9- 12-STATION AIR COOLED PERMANENT MOLDING MACHINES, w/Hydraulic System, Acetylene Stations & Controls.
- 2- 12-STATION WATER COOLED PERMANENT MOLDING MACHINES, w/Hydraulic System, Acetylene Stations & Controls.
- 1- 6-STATION WATER COOLED PERMANENT MOLDING MACHINE, w/Hydraulic System, Acetylene Station & Controls.
- 1- LOCHINVAR WATER SYSTEM, Including: Copper FIN II Variable Speed Proportional Fired Hot Water Boiler & Allen Bradley PLC Controls & Related Pumps to Control 3 Machines, Water Softener.
- 1- NO BAKE MOLDING SYSTEM, Including: 15' Universal Bucket Elevator, Simpson 1F Muller, 12" X 8' Cleated Belt Conveyor, Continuous Mixer & Pumps, 6 Station Turntable, w/Controls.

OVEN

- 1- MICHIGAN HANGING TYPE CORE DRYING OVEN, s/n 3-5457-A w/15' Gas Fired Oven, Hanger System, Gas System & Controls 650'.

ROLLING STOCK

- 2- 1000 LB. BIG JOE ELECTRIC OPERATED LIFTS, MDL'S. 1018 & 9957 R[74]C, s/n's 73309, 52881.
- 1- 500 LB. MARKLIFT SELF PROPELLED MANLIFT, MDL. 41-KB0790, s/n 690M488, 41'.
- 1- TENNET RIDING TYPE L/P OPERATED FLOOR SWEEPER, MDL. 6550, s/n 8064.
- 1- BOBCAT DIESEL OPERATED SKID STEER LOADER, MDL. 753, s/n 512718959.



BOBCAT DIESEL OPERATED SKID STEER LOADER, MDL. 753



GARDNER DENVER PORTABLE AIR COOLED 150 HP SCREW TYPE AIR COMPRESSOR, MDL. EDM00A



ZURN 375 CFM COMPRESSED AIR DRYER, MDL. 75R-75A

(6) AIR COMPRESSORS

- 2- 1992 GARDNER DENVER MDL. EBMQLC AIR COOLED 75 HP SCREW TYPE AIR COMPRESSORS, s/n M67456, M67457 Digital Readouts, 9960 Hours.
- 2- QUINCY AIR COOLED 300 HP SCREW TYPE AIR COMPRESSORS, MDL. QSI-1500, s/n 96790, 98343, Approx. 17000 Hours Each, Digital Readouts.
- 1- GARDNER DENVER PORTABLE AIR COOLED 150 HP SCREW TYPE AIR COMPRESSOR, MDL. EDM00A, s/n M60778 11856 Hours Digital Readouts.
- 1- INGERSOLL RAND 25 HP AIR COOLED SCREW TYPE AIR COMPRESSOR, MDL. SSR.

(2) AIR DRYERS

- 2- ZURN 375 CFM COMPRESSED AIR DRYER, MDL. 75R-75A, s/n 5-19737.

Terms

Sale Conducted by: biditup!, Subject to our customary terms of sale, (Available at the auction site on the day of the sale), and any and all amendments and modifications announced by the auctioneer at the time of the auction. The auctioneer and seller make no warranties or guarantees, expressed or implied, as to the defects in or the correctness or accuracy of the descriptions in any advertising of any item(s) being auctioned and will not be responsible for any advertising discrepancies or inaccuracies of any kind. All items sold will be on an "AS IS", "WHERE IS", and "WITH ALL FAULTS", basis "WITHOUT EXCEPTION" and "WITH REMOVAL AT BUYER'S RISK AND EXPENSE". AUCTIONEER AND SELLER MAKE NO WARRANTIES OR GUARANTEES OF ANY KIND, EXPRESSED OR IMPLIED AS TO THE NATURE, QUALITY, VALUE OR CONDITION OF THE ITEM(S) BEING AUCTIONED OR ITS (THEIR) SUITABILITY FOR ANY USE. AUCTIONEER AND SELLER EXPRESSLY AND SPECIFICALLY DISCLAIM WITHOUT LIMITATION ANY WARRANTY OF MERCHANTABILITY OR FITNESS FOR A PARTICULAR PURPOSE. AUCTIONEER SHALL NOT BE LIABLE FOR SPECIAL, CONSEQUENTIAL OR INCIDENTAL DAMAGES. It shall be the buyer's obligation to verify information and descriptions of property prior to sale. biditup!, and its advertising agency assume no liability for errors or omissions in this brochure. The auctioneer does not warrant the age, accuracy, genuineness, authenticity, description, weight, count or measure of any listings specified herein. Although it is not likely, auction sales are subject to cancellation or postponement, and sometimes items are withdrawn from the sale, kindly contact biditup!, prior to travel as there will be no reimbursements. On the day of the sale, all successful bidders must immediately pay the full purchase price in cash, certified funds, cashiers check, wire transfer or company check with a letter from the buyer's bank guaranteeing unqualified payments to biditup! This letter is valid until 30 working days after the auction sale. Company checks without letter from bank guaranteeing unqualified payment will not be accepted. The failure to make payment promptly shall be considered default and each lot or lots so purchased will be placed for resale. The buyer must pay the total invoice price for all the lots purchased before any removal can begin. All buyers must pay applicable sales tax (unless evidence of exemption is provided to auctioneer's satisfaction). Buyers are responsible for the transportation, associated costs and risks involved in the removal of purchased item(s). Certain items may contain residual chemicals and/or hazardous materials. The purchaser(s) hereby indemnify and hold harmless the auctioneer and seller from any and all damages, claims or liability from any injuries to persons or property of any type whatsoever caused during the sale of, during the removal, or during use or operation of the purchased item(s). If you are unable to attend, please contact us regarding placing a proxy bid. PLEASE NOTE: ALL SALES ARE SUBJECT TO A BUYER'S PREMIUM. BUYER'S PREMIUM, 10%.

Can't Attend
the Sale in
Cynthiana, KY?
Call 818.508.7034
to Place a Proxy Bid
or Let us Bid
via Phone for You!

Propane Tanks, Blast Cleaning Machines, Grinders, Inspection, Cranes & Hoists



3 Available

30,000 GALLON PROPANE TANKS



BROWN & SHARPE COORDINATE MEASURING MACHINE, MDL. 7-10-7C XCEL VALIDATOR



SERVICE BRINELL TESTER, MDL. H9-652

(3) PROPANE TANKS

3- 30,000 GALLON PROPANE TANKS, w/Vaporizer System.

(4) BLAST CLEANING MACHINES

- 1- 1996 28 CU. FT. BADGER TUMBLAST CLEANING MACHINE, MDL. 28MN215FS40D, s/n 01281996 w/Floor Loader, Discharge Oscillating Conveyor 36" X 11' w/End Drive, (2) Direct Drive Shot Wheel & Shot System, PLC Controls.
- 1- 28 CU. FT. WHEELABRATOR SUPER II TUMBLAST CLEANING MACHINE, s/n A135811 w/Floor Loader, Discharge Oscillating Conveyor 36" X 15' w/End Drive, Shot System, PLC Controls.
- 1- 28 CU. FT. WHEELABRATOR SUPER I TUMBLAST CLEANING MACHINE, s/n A125902 w/Floor Loader, Discharge Oscillating Conveyor 36" X 11' w/End Drive, Shot System, PLC Controls.
- 1- 6' PANGBORN TABLE TYPE BLAST CLEANING MACHINE, MDL. 6LK, w/Shot System.

BARRELS

1- 36" X 56" TUMBLING BARREL, w/Stand. 10-NEW BARRELS OF S-390 STEEL SHOT.

(29) GRINDERS

- 9- 30" SETCO SINGLE END SNAG GRINDERS, MDL. HS33VLWR, 10 HP.
- 4- BESLY & GARDNER # 25 OPPOSED WHEEL GRINDERS, 20 HP Each Side w/8-Station Indexers & Discharge Belt Conveyors & Fixtures.
- 10- 6"-12" PEDESTAL TYPE DOUBLE END GRINDERS.
- 6- DIE GRINDING STANDS W/AIR DIE GRINDERS.

INSPECTION

- 1- BROWN & SHARPE COORDINATE MEASURING MACHINE, MDL. 7-10-7C XCEL VALIDATOR, s/n 0289100 w/RENISHAW MH8 Probe, MM4 Software, 51" X 64" Granite Table, 25.6" X, 39.4" Y, 25.6"Z, 3000 Lb. Capacity
- 1- ROLAND COMPUTER AIDED MODELING MACHINE, MDL. PNC-3000 CAMM-3, s/n 770550, 3-Axis 6 1/2" X 12" Mounting Table.
- 1- PORTAGE LAYOUT INSPECTION MACHINE, MDL. 48A, w/3 Axis Digital Readouts, 50 X 70 Table, 30" Rotary Table.
- 1- 14" MITUTOYO OPTICAL COMPARATOR.
- 1- SERVICE BRINELL TESTER, MDL. RDT1410, s/n 7052.
- 1- SERVICE BRINELL TESTER, MDL. H9-652, s/n 1058.
- 1- WILSON ROCKWELL TESTER, MDL. 5JR6RB, s/n 2004.
- 1- 30" X 48" X 8" GRANITE TABLE.
- 1- 48" X 60" X 8" GRANITE TABLE.
- 2- 36" X 48" X 6" GRANITE TABLE.

(27+) CRANES & HOISTS

- 1- 5 TON NORTHERN A/C POWERED TOP RUNNING BRIDGE CRANE, Approx. 60' Span, Cab Operated, Magnet Controls.
- 1- 63" DIAMETER SQUARE TYPE SH CRANE MAGNET. Over (25) Air & Electric Hoists, 1/4 to 3 Ton w/360° Jib, Wall Jibs, Bridge & Monorail Systems.



28 CU. FT. WHEELABRATOR SUPER I TUMBLAST CLEANING MACHINE



1996

28 CU. FT. BADGER TUMBLAST CLEANING MACHINE, MDL. 28MN215FS40D

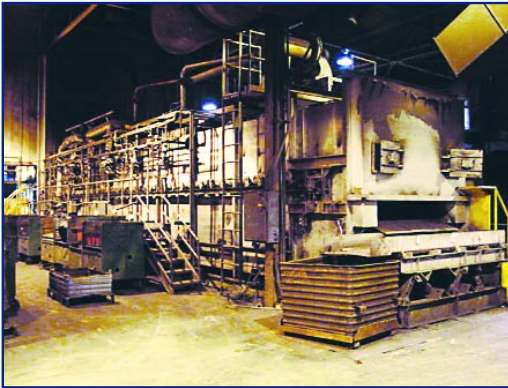


14" MITUTOYO OPTICAL COMPARATOR

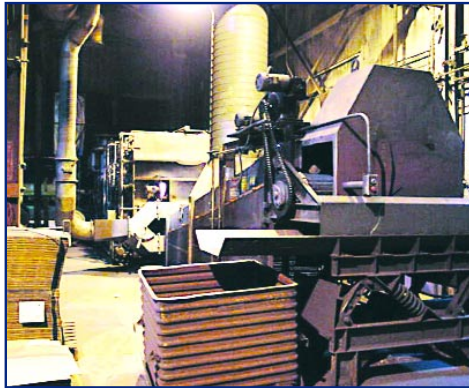


PORTAGE LAYOUT INSPECTION MACHINE, MDL. 48A

Heat Treat, Pattern Shop, Welders, Lab Equipment



1750° HOLCRAFT BELT TYPE CONTINUOUS ANNEALING & NORMALIZING FURNACE



1750° HOLCRAFT BELT TYPE CONTINUOUS ANNEALING & NORMALIZING FURNACE



SPECTRO ELEMENT SPECTROMETER, MDL. LAVLD002B 15

(5) HEAT TREAT FURNACES

- 1- 1750° HOLCRAFT BELT TYPE CONTINUOUS ANNEALING & NORMALIZING FURNACE, w/UHERDEN Hydraulic Floor Loader & Feeder, 60" X 35' Furnace, Discharge Mesh Belt Conveyor 80" X 20' w/Forced Air Cooling & Hood, Honeywell Controls w/Digital Readouts, 3 Zones, Gas System & Blower, 6 Burners Per Side.
- 1- 1750° HOLCRAFT BELT TYPE CONTINUOUS ANNEALING & NORMALIZING FURNACE, w/UHERDEN Hydraulic Floor Loader & Feeder, 60" X 50' Furnace, Discharge Oscillating Conveyor 30" X 10' Honeywell Controls w/Digital Readouts, 3 Zones, Gas System & Blower, 6 Burners Per Side.
- 1- 1750° HOLCRAFT BELT TYPE CONTINUOUS ANNEALING & NORMALIZING FURNACE, w/UHERDEN Hydraulic Floor Loader & Feeder, 48" X 25' Furnace, Discharge Mesh Belt Conveyor 48" X 25' w/Forced Air Cooling & Hood, Honeywell Controls w/Digital Readouts, 3 Zones, Gas System & Blower, 6 Burners Per Side.
- 2- PUSHER TYPE HEAT TREAT FURNACES w/(75) Alloy Trays, Pusher System, Gas System & Controls.

PATTERN SHOP

- 3- 24" MASTER SINGLE END DISC GRINDERS, MDL. R, s/n's 5752, 5933, 5709.
- 1- 20" MASTER SINGLE END DISC GRINDER.
- 1- 14" POWERMATIC VERTICAL BAND SAW, MDL. 141, s/n 641220.
- 1- 14" ROCKWELL VERTICAL BAND SAW, MDL. 28-300, s/n 3D5673.
- 1- 14" POWERMATIC VERTICAL BAND SAW, MDL. 143, s/n 9143073.
- 1- 12" DOALL SINGLE END DISC GRINDER, MDL. 1406, s/n 09428.
- 2- 12" WILTON SINGLE END DISC GRINDERS, MDL. 4402A, s/n 008267.
- 1- 12" MASTER TABLE SAW.
- 2- MASTER TABLE TYPE SPINDLE SANDER, MDL. 2SP, s/n's 1114, 1325.

(7) WELDERS

- 1- HYPER THERM POWERMAX 1250 G3 SERIES PLASMA CUTTING SYSTEM, s/n 1250-003790.
- 1- LINCOLN TIG250 250 AMP TIG WELDER.
- 1- POWERCON 300SM PORTABLE WELDER, w/MILLER Wire Feeder.
- 1- LINCOLN MDL. R3M-300 300 AMP PORTABLE WELDER, s/n AC284064.
- 1- LINCOLN RANGER 8 PORTABLE GAS OPERATED 225 AMP WELDER.
- 1- MILLER DIALARC 250 AC/DC WELDER, s/n KF829972.
- 1- AIRCO 150 AMP HELIARC D/C WELDER, s/n HD670900.

LAB EQUIPMENT

- 1- 1993 SPECTRO ELEMENT SPECTROMETER, MDL. LAVLD002B 15, s/n 5416/93 w/Computer & Printer.
- 1- ELTRA METALYST CS 100/1000RF CARBON SULPHUR DETERMINATOR, w/Digital Readouts & Satorious Digital Gram Balance & Printer.
- 1- 60,000 LB. TINIUOUS OLSEN 4-POST HYDRAULIC TENSILE TESTER, s/n 176475 w/Mdl. 290 Digital Readout Controller s/n 14132, Chart Recorder & Extensometer.
- 1- NIKON EPIPHOT 200 TOP MOUNTED BINOCULAR MICROSCOPE, s/n 036691 w/Power Unit, Light Source, Sony CCD-IRS/RGB Color Video & Sony Monitor.
- 1- BUEHLER WET CUTOFF SAW & STAND, MDL. 10-1030.
- 1- BUEHLER HANDIMET 2 4 STRIP WET GRINDER.
- 1- 8" BUEHLER WET POLISHER.
- 1- UNITRON BINOCULAR TOP MOUNTED MICROSCOPE, s/n BI-12117 w/Camera.
- 1- NIKON STEREO ZOOM MICROSCOPE.
- 1- TYLER ROTAP SHAKER & SCREENS, MDL. RX-29.
- 1- LECO CARBON SULPHUR DETERMINATOR, MDL. WR-12, w/Muffle Furnace.
- 1- 2" KRAUTKRAMER BRANSEN ULTRASONIC THICKNESS TESTER, MDL. DMVDL.
- 1- DIETERT HOT TENSILE TESTER, MDL. 365, s/n 345.



VIEW OF PATTERN SHOP



ELTRA METALYST CS 100/1000RF CARBON SULPHUR DETERMINATOR



60,000 LB. TINIUOUS OLSEN 4-POST HYDRAULIC TENSILE TESTER

To Schedule an Auction, Call: 818.508.7034

Dust Collectors, Casting System, Vertical Machining Centers, Horizontal Machining Center, Vertical Mills



DUST COLLECTORS



CINCINNATI ARROW 1000 CNC



CINCINNATI TALON 208 TURNING CENTER

(11) DUST COLLECTORS

- 1- STEELCRAFT PULSE TYPE, MDL. MS 10 368 4545, 20000 CFM, 60 HP.
- 1- AMEREX PULSE TYPE, MDL. 840211-206, 22000 CFM, 40 HP.
- 1- FLEXKLEEN PULSE TYPE, MDL. 100 WRB5-192, 21000 CFM, 125 HP.
- 1- MICROPULSAIRE PULSE TYPE, MDL. KTR, 10000 CFM, 30 HP.
- 1- STEELCRAFT PULSE TYPE, MDL. MP10-160-1976, 9000 CFM, 20 HP.

- 1- FLEXKLEEN PULSE TYPE, MDL. 100 WRBS-80, 8000 CFM, 25 HP.
- 1- COX PULSE TYPE, MDL. 60-6, 7500 CFM, 25 HP.
- 1- AMEREX PULSE TYPE, 7500 CFM, 15 HP.
- 1- STEELCRAFT PULSE TYPE, MDL. MP10-256-3161, 7000 CFM, 40 HP.
- 2- COX DUST COLLECTORS, 2500 CFM.

PARTS

COMPLETE PARTS DEPT, Including: Nuts, Bolts, Motors, Flame Cabinets, Supply Cabinets, Parts Cabinets, Cylinders, Safety Supplies, Electrical Supplies, Bearings, Pulleys, (8) Lyons Cabinets, Etc.
COMPLETE MAINTENANCE DEPT, Including: Wells Band Saw, Toledo #20 20" Chop Saw, Clausing Mdl. 2276 Variable Speed Drill, Atlas #4 Arbor Press, Dake Mdl. 6-651 150 Ton Shop Press.

(5) VERTICAL MACHINING CENTERS

- 2- 1998 CINCINNATI ARROW 1000 CNC, s/n 7049-A0B-98-0632, 0626 w/ACRAMATIC A2100 CNC Controls, 3 Axis, 21-Position Tool Changers, Chip Conveyors, Coolant Systems.
- 3- CINCINNATI CINTIMATIC, MDL. 15VC-1500, s/n 9511B0185-0118, 910VC15M-0158, w/Acrumatic 900 Controls, 3 Axis, 30 Position Tool Changer, Hydraulic Systems.

(400+) BOXES & HOPPERS

- OVER 200- 40" X 40" X 30" DEEP TOTE BOXES.
- OVER 100- 40" X 40" X 30" DEEP DROP BOTTOM TOTE BOXES.
- OVER 40- 20" X 30" X 18" DEEP PORTABLE TOTE BOXES.
- OVER 80- 30" X 20" X 24" DEEP WIRE BASKETS.
- OVER 10- 36" X 70" X 36" DEEP SELF DUMPING HOPPERS.
- OVER 15- DROP BOTTOM STANDS.

CNC TURNING CENTER

- 1- 1995 CINCINNATI TALON 208, s/n 6808U0895-0191 w/3-Jaw Chuck, Chip Conveyor, ACRAMATIC 850SX CNC Controls, 12 Position Tool Changer.

HORIZONTAL MACHINING CENTER

- 1- 1998 SHARONA, MDL. HPM-60, s/n 998016001 w/30 Position Tool Changer.

CASTING SYSTEM

- 1- **CASTING HANDLING SYSTEM,** Including: UHRDEN TUBAR Hydraulic Dumper, G/K Feeder, 48" X 20' RANSELHOFF Octagonal Tumbler w/Drive, Fines Discharge Belt Conveyor, Tub Dump Station w/GK Feeder, 32" X 60' Sorting Oscillating Conveyor, 24" X 200' Hooded Belt Conveyor, 24" X 40' Oscillating Conveyor.

(5) VERTICAL MILLS

- 1- MILLTRONICS PARTNER MB19 VARIABLE SPEED CNC, s/n 420-3750 w/CENTURION I CNC Controls.
- 1- MILLTRONIC PARTNER P9 SERIES E CNC, s/n 2311 w/CENTURION V CNC Controls, 20 Position Tool Changer.
- 1- DYNA MITE BENCH TYPE CNC, MDL. 2800, w/Coolant System & Controls.
- 2- BRIDGEPORT VARIABLE SPEED MILLING MACHINES, 1 HP.



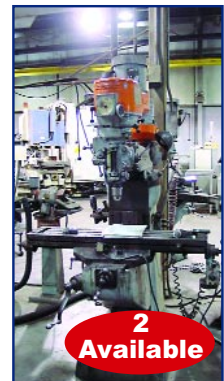
DROP BOTTOM STANDS



MILLTRONICS PARTNER MB19 VARIABLE SPEED



DYNA MITE BENCH TYPE CNC, MDL. 2800



BRIDGEPORT VARIABLE SPEED MILLING MACHINE

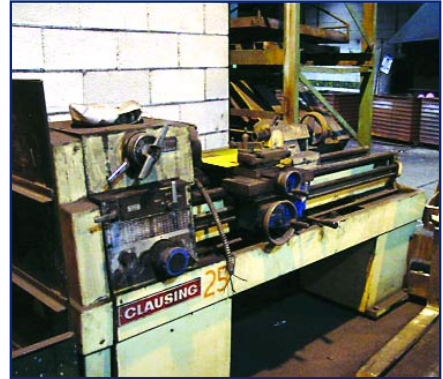
Horizontal Boring Mills, Radial Drills, Hydraulic Bender, Grinders, Lathes, Stretch Wrap Machine



LUCAS HORIZONTAL BORING MILL MDL. 42B-60



42" BLANCHARD ROTARY SURFACE GRINDER



16" X 60" CLAUSING TRAY TOP LATHE, MDL. 1500

(2) HORIZONTAL BORING MILLS

- 1- LUCAS MDL. 42B-60, w/40" X 24" T Slotted Table, 3 Axis Digital Readouts, Outboard Support.
- 1- BOKO MDL. RS1E, s/n 161823.

(2) RADIAL DRILLS

- 1- 5' CARLTON RADIAL ARM DRILL, 11" Column w/Box Table.
- 1- 4' OOYA RADIAL ARM DRILL, MDL. RE-1225M, 10" Column s/n N70-1696 w/Box Table.

HYDRAULIC BENDER

- 1- 1995 LAKELAND, MDL. 1400, s/n 95-003.



LAKELAND HYDRAULIC BENDER MDL. 1400



3,000 LB. INFRAPAK STRETCH WRAP MACHINE MDL. EZ-DUZ-IT PLUS

(4) GRINDERS

- 1- 42" BLANCHARD ROTARY SURFACE GRINDER, s/n 13781 w/Segmented Wheel & Sludge System.
- 1- FALCON CHEVALIER SURFACE GRINDER, MDL. FSG-618M, w/6" X 18" Magnetic Chuck.
- 2- CINCINNATI TOOL GRINDERS.

(2) LATHES

- 1- 22" X 120" CINCINNATI LATHE, s/n 1W515S-16 w/12" 3-Jaw Chuck, Taper, 2 1/4" Hole, Cross Slide.
- 1- 16" X 60" CLAUSING TRAY TOP LATHE, MDL. 1500, s/n 151897 w/8" 3-Jaw Chuck, Taper, Cross Slide.

STRETCH WRAP MACHINE

- 1- 3,000 LB. INFRAPAK MDL. EZ-DUZ-IT PLUS, s/n PT109H00N w/50" X 50" Turntable, Variable Speed Turntable & Carriage.

OFFICE FURNITURE & EQUIPMENT

Desks • File Cabinets • Table • Conference Table & Chairs • Oce 7050 Blue Print Copier • HP 7580 A Plotter • HP Designjet 750E Plus Plotter • Telephone System • Over 70 DELL, IBM, GATEWAY PENTIUM Computers to 933 MHZ • Over 30 LEX, HP, EPSON, IBM Printers.

MISCELLANEOUS

Engine Lift Stand, Roller Conveyor, Super Sack Unloader w/Elevator, Lightening Mixers, Shop Vacuums, 80" Rubber Lined Turntable, Hydraulic Tilting Stand, Portable Core Wash Kettles, Core Carts, Lockers, Vises, Ridgid 300 Threader, Tables, Wet Magnetic Inspection Station, Scales, Schmidt Mdl. 175-10 Stamping Machine, Inspection Gages, Micrometers, Air Tools, Hand Tools, Electric Tools, 40" X 80" Motorized Clam Bucket, Cement Mixer, Cupola Lining Guns & Much More!

FIRST ANNUAL MULTI-MILLION DOLLAR CONSIGNMENT SALE!

Now ACCEPTING CONSIGNMENTS!
SALE LOCATED IN DAYTON, OH - IN EARLY 2004!

Take Advantage of our Extensive National and International Following of Qualified Buyers with your Consignment of Excess or Unwanted Tools, Equipment and other Company Assets!

If Equipment is Too Large to Relocate, No Problem! We Can Arrange Pickup & Delivery to the Sale Site!

DON'T MISS THIS TERRIFIC OPPORTUNITY!
CALL TODAY: 818.508.7034

ASK US ABOUT OUR BIDCAST SERVICES



an industrial assets company

FIRST CLASS PRE-SORT
MAIL U.S. POSTAGE
PAID
PERMIT NO. 32365
LOS ANGELES, CA

11426 Ventura Blvd.
Second Floor
Studio City, CA 91604

Asa Marshall, Auctioneer
KY Lic. #:RP07050

Thinking of having an auction?
Need an appraisal?
Know of a facility closure?
Call: 818.508.7034, Ext. 12
Email: info@biditup.com

Biditup! Live On-Site
AUCTION
bid live in **Cynthiana, Kentucky**

Thursday, December 11th
Beginning at 10:30am
1327 New Lair Road, Cynthiana, KY

By Order of the Commonwealth of Kentucky Case #03-CI-145
and the Receiver in the Matter of: **PERMCAST, LLC**
Gray Iron Foundry & CNC Machine Shop
Featuring: Late Model Dual Track Inductotherm Furnace, Late Model Badger Shot Blast Machine,
Molding Systems, Heat Treat Furnaces, Pattern Shop, Lab Equipment & Rolling Stock

Upcoming Auctions

TUESDAY, NOVEMBER 25

DASIBI ENVIRONMENTAL CORPORATION

Air Pollution Monitoring Instrument Manufacturer • Live On-Site • Glendale, CA

TUESDAY & WEDNESDAY, DECEMBER 2 & 3

Assets No Longer Required in the Continuing Operations:

INTERNATIONAL TRUCK & ENGINE CORPORATION

World Famous Truck Manufacturer Featuring: Stamping Presses, Fabricating Equipment, Machine Tools, Rolling Stock, Plant Support Equipment & Gigantic Stores Inventory • Live On-Site • Springfield, OH

THURSDAY, DECEMBER 4

Assets No Longer Required in the Continuing Operations:

ACCO BRANDS, INC

Manufacturer of the World Famous SWINGLINE Stapler
MINSTER Stamping Presses & CNC Toolroom Equipment
Bidcast & Live On-Site • Sonora, Nogales, Mexico

TUESDAY, DECEMBER 9

Assets No Longer Required in the Continuing Operations:

XDI - EXTREME DEVICES, INC.

Manufacturer of CVD Diamond & Microstructures for New Technology HDTV Systems • Live On-Site • Austin, TX

**Heard of Any
Plant Closures?**
Finder's Fees Paid!

Call 818.508.7034
Ext. 13

information=knowledge=money
biditup.com