

PRESORTED
FIRST CLASS
MAIL
U.S. POSTAGE
PAID
ABLE MAILING

BIDTUP
11426 Ventura Blvd.
Second Floor
Studio City, CA 91604
Peter Horton, Auctioneer, AL Lic. 213

MCNALLY MANUFACTURING
A DIVISION OF METSO MINERALS INDUSTRIES, INC.
THURSDAY JUNE 13TH
9:30 AM
1308 N. WALNUT ST., PITTSBURG, KS
Inspection: Tuesday, June 12th 9:00 am to 4:00 pm
& Morning of Sale

THOMAS FOUNDRY, INC.
A DIVISION OF METSO MINERALS INDUSTRIES, INC.
TUESDAY JUNE 11TH
10:30 AM
900 NORTH 28TH ST., BIRMINGHAM, AL.
Inspection: Monday, June 10th 9:00 am to 4:00 pm
& Morning of Sale

NO TOLL AUCTION

AUCTION

UPCOMING AUCTIONS

- #1 AAA RENT ALL, INC.
CONSTRUCTION & RENTAL YARD EQUIPMENT
JUNE 15 • LOS ANGELES, CA
- #2 HASKELL SENATOR INTERNATIONAL, INC.
MANUFACTURER OF EXECUTIVE OFFICE FURNITURE, LATERAL FILES, FILE CABINETS,
STAMPING, ROLLFORMING & FABRICATING FACILITY
JUNE 18 • VERONA (PITTSBURGH), PA
- #3 MBCI
STATE-OF-THE-ART PRE-FAB METAL BUILDING, STUD & TRACK MFG.
JUNE 20 • HOUSTON, TX
- #4 NO LONGER REQUIRED IN THE ONGOING OPERATIONS OF: KURT MANUFACTURING CO.
LATE-MODEL NEW BRITAIN SCREW MACHINES & CNC MACHINING FACILITY
JUNE 26 • COON RAPIDS, MN
- #5 VERNON WHEELON
(4) 2,500-T, 21,000-T, 41,000-T & 60,000-T FLUID FORMING PRESSES. ON-LINE AUCTION
JULY 9 • LOS ANGELES, CA

THINKING OF HAVING AN AUCTION?
NEED AN APPRAISAL?
KNOW OF A PLANT CLOSURE?
CALL: (818) 508-7034 EXT. 12

DIRECTIONS

THOMAS FOUNDRY, INC.,
JUNE 11 10:30 A.M. BIRMINGHAM, AL.

From Birmingham Intl. Airport start going south on Airline Dr. by turning left. Turn right onto Transportation Avenue. Turn left onto Messer Airport Highway. Turn right onto Richard Arrington Jr. Blvd. North. Turn left onto 38th street north.

MCNALLY MANUFACTURING,
JUNE 13 9:30 A.M. PITTSBURG, KS.

- From Joplin, Mo. Airport leave airport to Hwy. 171 follow it till it becomes Hwy. 57 in Kansas take 57 to 69 North exit Hwy. 126 East (right) 1 mile to Walnut St. turn left to plant.
- Kansas City Airport South on I-29 to Hwy 635 to 35 West exit U.S. 69 South to U.S. 69 Business district in Pittsburg go to 15th St. turn right 2 blocks to Walnut St. turn left watch for signs.

AUCTION

PLANTS CLOSED • EVERYTHING SELLS

THOMAS FOUNDRY, INC.

A Division of METSO MINERALS INDUSTRIES, INC.
Large Capacity Steel Foundry and Machining Facility.

1

TUESDAY JUNE 11TH
10:30 A.M.

900 North 38th Street
Birmingham, AL.

INSPECTION
MONDAY JUNE 10TH
9:00 A.M. to 4:00 P.M.
and Morning of Sale



GRAY 16' CNC Vertical Boring Mill (Remanufactured 1999)
Over 2 Million Dollars Replacement. (To Be Auctioned June 13th McNally Mfg.)

2

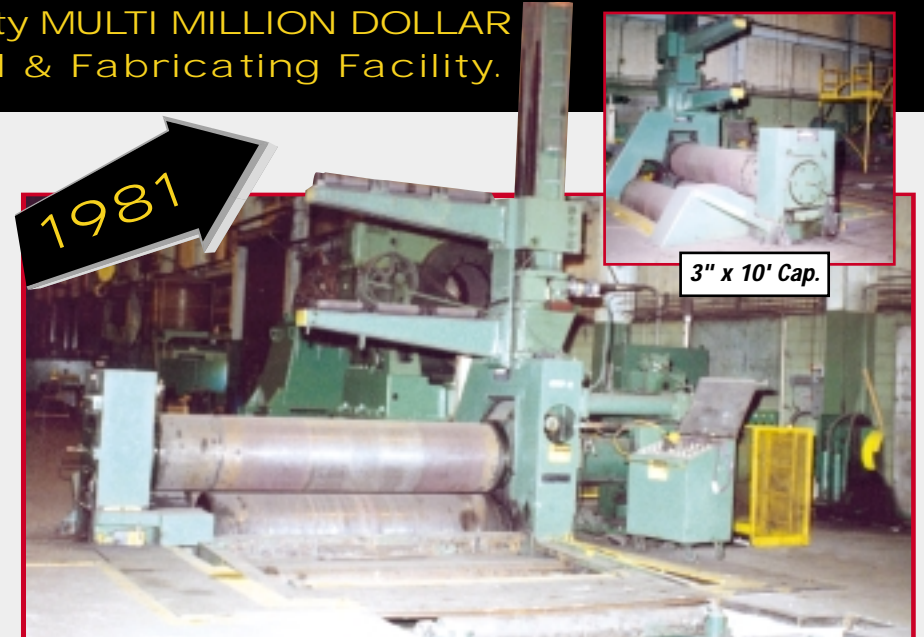
MCNALLY MANUFACTURING

A Division of METSO MINERALS INDUSTRIES, INC.
Large Capacity MULTI MILLION DOLLAR
Machine Tool & Fabricating Facility.

THURSDAY JUNE 13TH
9:30 A.M.

1308 North Walnut Street
Pittsburg, KS.

INSPECTION
WEDNESDAY JUNE 12TH
9:00 A.M. to 4:00 P.M.
and Morning of Sale



BERSTCH No. 32 Hydraulic Drive Initial Pinch Type Roll
Over 1 Million Dollars Replacement. (To Be Auctioned June 13th McNally Mfg.)

BIDITUP
An Industrial Assets Company

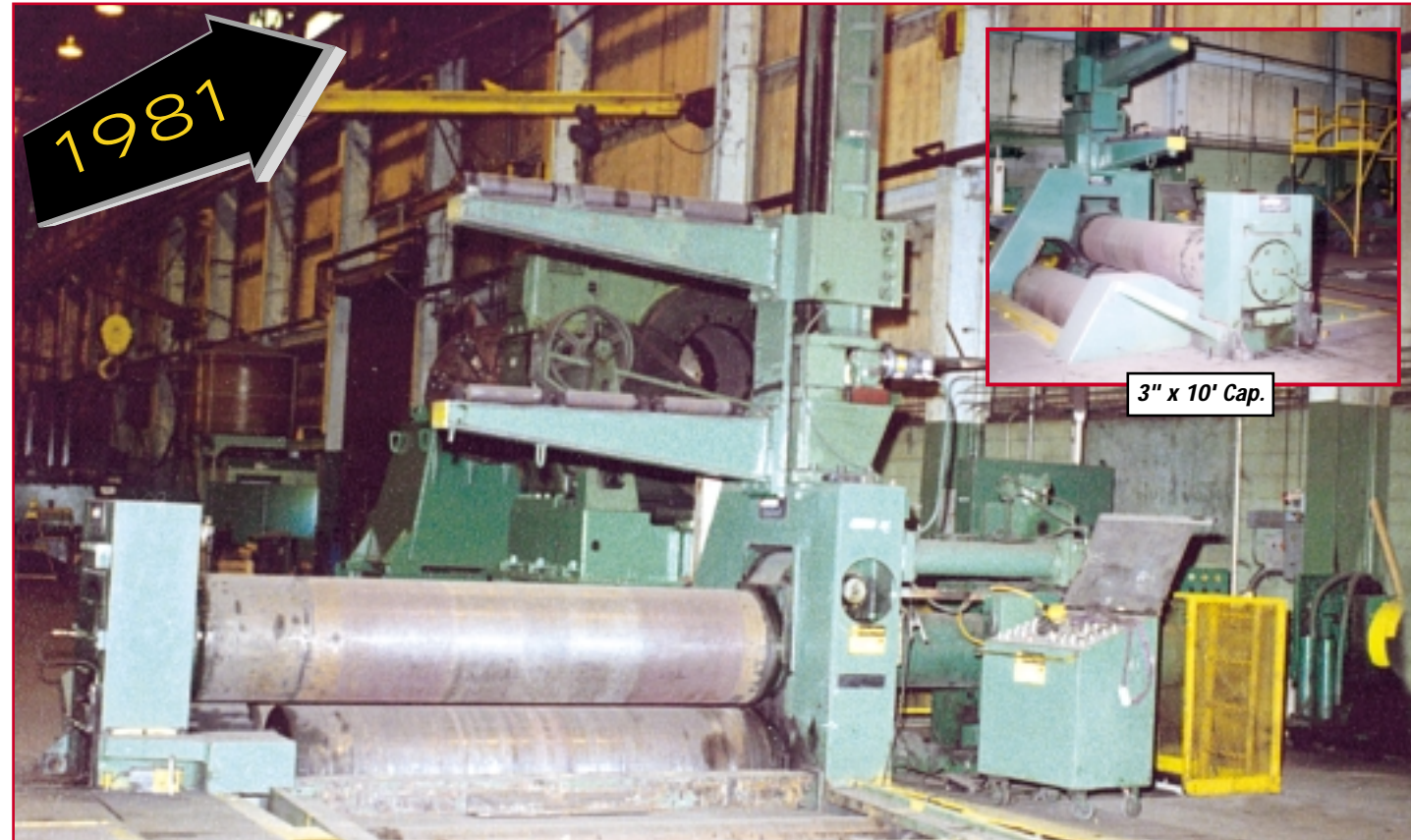
Tel: (818) 508-7034
Fax: (818) 508-3025

www.biditup.net
email: info@biditup.net

AUCTION 2 • JUNE 13 • McNALLY MANUFACTURER • PITTSBURG, KS



GRAY 16' CNC Vertical Boring Mill (Remanufactured 1999). Over 2 Million Dollars Replacement. (To Be Auctioned June 13th McNally Mfg.)



BERSTCH No. 32 Hydraulic Drive Initial Pinch Type Roll. Over 1 Million Dollars Replacement. (To Be Auctioned June 13th McNally Mfg.)

AUCTION 1 • JUNE 11 • THOMAS FOUNDRY • BIRMINGHAM, AL



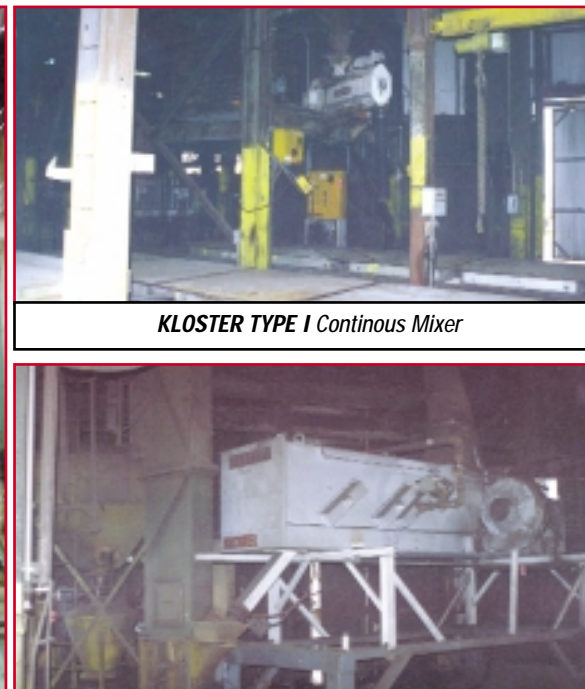
WHITING Arc Furnace



KLOSTER Continuous Mixer



KLOSTER TYPE I Continuous Mixer



CARVER Continuous Mixer

KLOSTER Sand Heater/Cooler



WHEELABRATOR 10' Diameter Table Blast

ARC MELTING FURNACE

WHITING ARC FURNACE with MCGRAW Edison 5000KVA Transformer, Charge Bucket, Top Loading

INDUCTOTHERM MELTING FURNACE

INDUCTOTHERM MDL. 1500 VIP, POWERMELT Furnace with 2-Steel Shell Furnaces, Water System and Controls.

CONTINUOUS MIXERS

KLOSTER TYPE II, 1500# per Minute Continuous Mixer, with Compaction Table and Mold Car Loop, Sand Heater and Controls S/N 7706.

KLOSTER TYPE I, 600# per Minute Continuous Mixer, with Roller Conveyor Loop, Sand Heater and Controls, MS7654.

CARVER 100# per Minute Continuous Mixer, with Roller Conveyors and Controls.

SAND MIXER

CARVER MDL. 3CG, Core Mixer with Controls, 800 lb. Cap, S/N 1661.

RECLAIM SYSTEM

RECLAIM SYSTEM MDL. V/M 120, with G/K Shakeout, 20 Ton Per Hour Cap, G/K Vibramill, Approx. 30' Hooded Oscillating Conveyor.

SHOT BLAST EQUIPMENT

WHEELABRATOR 10' Diameter Table Blast w/ 2-30 HP Shot Wheels and Shot System, w/ 40" CFS Separator.

DUST COLLECTION

(5) Compartment Shaker Type Dust Collection System.
IAP MDL. 365EAD-R-AAR-1 26500CFM, Dust Collection System, 150 HP, S/N 1A0890417.

HEAT TREAT

JOHNSTON Car Bottom Type Heat Treat Furnace 10' x 7' x 5'.
Heat Treat System w/ 3 Box Furnaces and Swivel Crane.

FOUNDRY LAB

BAIRD Model DV4, Spectrometer, w/ Printer, Monitor, Processor, S/N J07379.

BUEHLER Polishers, VIBROMET.

BUEHLER Mounting Press, KING BRINELL Tester & BRINELL Hardness Tester.

UNITRON MC Microscope w/ Fiber Optics Lite Source, Muffle Ovens, Remelt Furnace, DIETERT Sand Shaker w/ Sleeves S/N 30877.

TUESDAY JUNE 11th
10:30 A.M.

900 North 38th Street
Birmingham, AL.

INSPECTION
MONDAY JUNE 10th
9:00A.M. to 4:00 P.M.
and Morning of Sale

AUCTION 1 • JUNE 11 • THOMAS FOUNDRY • BIRMINGHAM, AL

FLASKS

Large Quantity of Molding Flasks and Bottom Plates.

LADLES

Large Quantity of Pouring Ladles.

GRINDER

24" Swing Frame Grinder 25 HP.

VERTICAL BORING MILLS

CINCINNATI High-Pro Vertical Boring Mill, 2 Rail Heads, 8' Table, 10' High Clearance With Pendant Controls, 0-36 RPM, 50 H.P. Main Motor.

BETTS Vertical Boring Mill, 12' Table, 80 RPM, 30 H.P. with (1) Snag Grinder on Tool Post and (1) Blanchard Grinding Head on the Other Fixture, Pendant Controls, Sludge Conveyor.

CINCINNATI Hypro Boring Mill, Swing 8' Table, 9' High Clearance, 0-40 RPM, 50 H.P. Table Drive, 2 Rail Heads, with Side Head, Pendant Controls, Table Capacity 37,500 lbs., 14" Above Floor.

BETTS Vertical Boring Mill, 108" Table, 2 Rail Heads, Pendant Controls, Dro's 30 H.P.

BETTS Vertical Boring Mill, 104" Table, w/2 Rail Heads, Used for Snag Grinders, w/Chip Conveyor.

HORIZONTAL BORING MILLS

GIDDINGS & LEWIS Boring Mill, MDL. 350, 4" Capacity, 60" x 92" Table, 7' x 4' Travel, 25 H.P. Main Motor Drive, w/ Outboard Support, Horizontal Boring Bar, 280 RPM Spindle, S/N 9319.

P.I.V. ANTRIEB WERNER REINERS Horizontal Boring Mill, MDL. RB4-5N. 3" X 4' ROTARY TABLE, Outboard Support with Rotary Table 48" Outside, S/N 229-630.

PLANER MILL

GRAY Planer Mill, w/ Rail Head, Futuremill Head & Side Head.

MILLING MACHINE

BRIGEPOR Vertical Milling Machine, 9" x 48 Table, Power Feed, w/6" Mill Vise, 15" Rotary Table and Collets 1 H.P. Head.

CNC LATHE

AMERICAN Pacemaker CNC Lathe, 24 x 12' Bed, 60 HP Main Motor, with Allen Bradley 7320 Controls, 24" Chuck, 4 Jaw Chip Conveyor, 800 RPM, S/N 78835-70.

VERTICAL TURRET LATHE

KING Vertical Turret Lathe, 72" Chuck, 2 Rail Heads, Side Head, with Pendant Controls, 0-30 RPM, 25 H.P.

ENGINE LATHES

AMERICAN Pacemaker Engine Lathe, 22" x 8' with Tooling & Taper, S/N 77683-65.

SMITH & GRACE Engine Lathe 20" x 12' Centers, 220 RPM, 30 H.P., Type 21, with Tooling & Taper Attachment, S/N 33892-7-62.

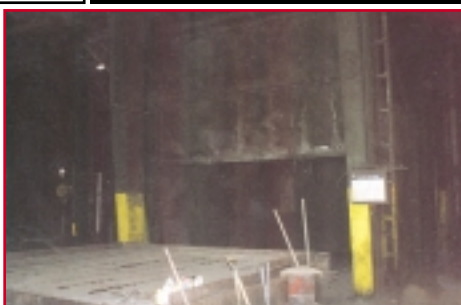
CLAUSING Colchester Engine Lathe, 13" x 36" w/Buck 6 Jaw Chuck, Aloris Tool Post & Tool Holders, Miscellaneous Tooling, S/N F3/69679.



5 Compartment Shaker Type Dust Collection System



Swing Frame Grinder



JOHNSTON Car Bottom Type Heat Treat Furnace



CINCINNATI High-Pro Vertical Boring Mill



BETTS 108" Vertical Boring Mill



CINCINNATI High-Pro Vertical Boring Mill

VISIT OUR WEB SITE FOR UPCOMING AUCTIONS:
www.biditup.net
FOR E-MAIL NOTIFICATION:
INFO@BIDITUP.NET

AUCTION 1 • JUNE 11 • THOMAS FOUNDRY • BIRMINGHAM, AL

RADIAL DRILLS

AMERICAN Radial Drill, 17" x 7' Column, Hole Wizard, T-Base, Box Table.

CARLTON Radial Drill, with T-Slot Work Table, S/N 741.

GIDDINGS & LEWIS Radial Drill, 4" x 9" Column, Chip Master, w/ Box Table, S/N 951-06221.

CINCINNATI Bickford Radial Drill Service with Box Table.

PRESSES

4 **POST** Hydraulic Press, 200 Ton 6' x 6' Bed Area, Free Standing.

4 **POST** Press 150 Ton, Hydraulic, 30" x 8' Bed Area.

4 **POST** Press 50 Ton, with Table.

H-FRAME Hydraulic Press.

DRILL PRESSES

DELTA Drill Press, 15" Floor Type, S/N 98-3066.

ROCKWELL Drill Press, MDL. #15120, Table Top, 18" x 26" Table, S/N 1583112.

POWERMATIC Drill Press, 15" Floor Type.

BAND SAWS

ROCKWELL Vertical Band Saw, 36" Throat, S/N 1101-6.

POWERMATIC Vertical Band Saw, MDL. 143, 14" Throat, S/N 7-3879.

PEERLESS Horizontal Band Saw.

TABLE SAWS

ROCKWELL Table Saw, 10" Capacity, S/N 6386.

SCALES

TOLEDO Platform Scales, 10,000 lb. Capacity, Floor Type.

TOLEDO Scales, 50lb. Capacity.

TOLEDO Platform Scales, Bench Type.

GRINDERS

LANCER Grinder, 60".

MASTER Oliver Adrian Disc Grinder, 36" Capacity, 2 Head.

DISC Grinder, Max. 16" Capacity.

BLACK Diamond Drill Grinder.

PEDESTAL Grinder.

SANDERS

(2) **SPINDLE** Sanders, Pedestal Type.

DISC SANDER, Master, 24" Disc.

WOODWORKING

POWERMATIC Planer, MDL. 180. 18" x 6" Capacity, S/N 78B233.

CRESCENT Wood Planer, 16" Capacity.

Lot Miscellaneous Wood tools to Include Tables, Bins, Benches, Pneumatic Clamps, Various Tooling.

WELDERS

LINCOLN Ranger 8 Portable Welder, Diesel Power, Skid Mounted.

MILLER SRH444 Welder GOLDTAR 652 Welder with Torches and Accessories.

(2) **LINCOLN** 600 Amp Welder, Welding Tables, Air Arc Gun.

LINCOLN Powercon 3005.



SCHEISS 52" Vertical Boring Mill



KING 72" Vertical Boring Mill



AMERICAN PACEMAKER CNC Lathe



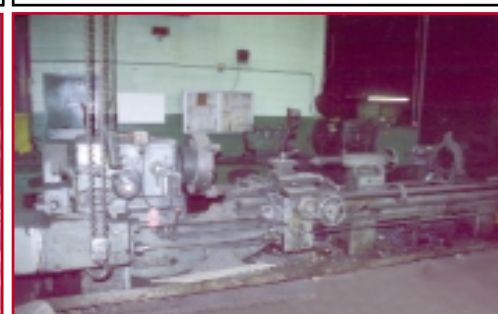
GRAY Planer Mill



GIDDINGS & LEWIS MDL. 350 Horizontal Boring Mill



AMERICAN PACEMAKER Engine Lathe



SMITH & GRACE Engine Lathe

AUCTION 1 • JUNE 11 • THOMAS FOUNDRY • BIRMINGHAM, AL

CRANES

POOLAIN Track Crane, with Cleve #4SW Magnet. **KOBEL CO.** Track Crane, MDL. K907LC-II, Track Type, w/ Hydraulic Hooks.
JOB CRANE 360" Type, w/ 3,000 lb. Electric Jib, w/ Pendant Controls.

FORKLIFTS

CATERPILLAR MDL. 155, 15,000 lb. Dual Pneumatic Tires, S/N 9CP00837.
CATERPILLAR MDL. 155, 15,000 lb. Diesel Engine Solid Tires, S/N 9CB00837.
HYSTER MDL. H11DXL, 12,000 lb. Capacity, Pneumatic Tires, S/N F005D04692M.
CATERPILLAR MDL. DB50, 11,500 lb. Pneumatic Tires, Gas Engine, S/N 60M10936.
HYSTER, 8,000 lb. Capacity, Pneumatic Tires, Propane.
CATERPILLAR MDL. VAE, 8,000 lb. Pneumatic Tires, GAS, S/N 7W6796.
HYSTER, 7,000 lb. Capacity, Pneumatic Tires, Gas Engine.
HYSTER, 6,000 lb. Capacity, Pneumatic Tires, Propane.
HYSTER MDL. G20, 4,000 lb. Propane, Solid Tire, S/N G20152591.
HYSTER, 4,000 lb. Capacity, Solid Tires, Propane.
CATERPILLAR MDL. CG20, 4,000 lb. Solid Tires, Propane, S/N 411097020.
Baker 4,000 lb. Capacity, Propane, Solid Tires.

MATERIAL HANDLING

1987 CALVAR CONDOR, Man Lift, MDL. 3, 800 lb. Capacity, Max. Reach 600", 3 Stage Mast, S/N P252-5623.
SKIDSTER BOBCAT Loader, MDL. M742D, w/ Bucket, Tires, Propane Fire, S/N 509418832.
KAWASAKI Front End Loader, MDL. M65III, Front End Bucket.
YALE Electric Pallet Jack, MDL. MTR-600, S/N 411393.
DUMP HOPPER.
 Various Size Dump Hoppers.

TRUCK

1984 FORD Truck Tractor, 500 Dial Tandem Axle, VIN# 1SDYL80U95SVAD6754GVWR, Tires Good, Dual Fuel Tanks w/Extra Tank, Diesel, License # 1X10122.

HEAT THRUST FURNACES & OVENS

THERMOLYNE Furnace, MDL. 1500, Heat Treat, 6' x 6' with Dros.

SAWS

ACCURITE Service Plate, 24" x 36" x 4", w/ Stand.
DEWALT Miter Saw.

AIR COMPRESSORS

INGERSOLL RAND Air Compressor, MDL. SSR-XF-150, Air Cooled, 739 CFM, 150 H.P., S/N F37526U00180.
INGERSOLL RAND Air Compressor, MDL. SSR-FP-350, 100 H.P., Air Cooled 1537 CFM, S/N E126AU94208.
INGERSOLL RAND Air Compressor, MDL. SSR-XF-100, 100 H.P., Air Cooled, 495 CFM, S/N CK3485U00192.
AIR COMPRESSOR 5 H.P.



CARLTON Radial Drill



AMERICAN 7' Radial



Hydraulic Wheel Press



Wheel Press



ACE 2 Ton Bridge Crane



PEERLESS Horizontal Band Saw



KOBEL CO. Track Crane

AUCTION 1 • JUNE 11 • THOMAS FOUNDRY • BIRMINGHAM, AL

MISCELLANEOUS

• Work Bench • Vise • Miscellaneous Hand Tools • Fans • Parts Washers • Cabinets • Drills • Bins • Benches • Dial Calipers • ID/OD Mics • Steel Rack • (34) Sections of Pallet Rack, 12' x 8' x 27" • Oil Filters • Electrical Boxes • Conduits • Hydraulic Hose • Spare Crane Parts • Electrical Parts • Components • Room Full of Bearings • Belts • Miscellaneous Motor Parts • Electrical Fittings • High Pressure Hose Fittings • Hydraulic Fittings • Track • Drive Motors • Light Components • Chain • Light Bulbs and Accessories • Box Tables 3' x 4' • Lot of Racks, Bins and Benches • Lot of Steel Tables-Various Sizes • **AC/OXY** Kit, Torch, Gauge and Dollies • Paint Type Cabinet • 10 Ton Floor Jack • Transfer Pump Gas Engine Leads • Vises • Accessories.

MISCELLANEOUS EQUIPMENT

RED DEVIL Paint Shaker, MDL. # 5400 • (2) **AC/OXY** Kits, Torch, Gauges and Dollies • Welding Positioner • **BLACK & DECKER** Magnetic Base Drill • **CAM-MANN** Tap Disintegrator, MDL. # G100-7A, S/N 75080 • Rotary Table 6' x 6', 1" Increments, T-Slotted • Snag Grinder • **RIGID** Threader, MDL. #500A, w/ Stand and Accessories • Drill Press • Grinder • **YAMAHA** Electric Golf Cart • Balancing Machine • Balancing Wheel and Stand • Magnafloc Unit Test Unit and Controls • 36" x 36" Tilt Frame Layout Table.



POOLAIN Track Crane



HYSTER 7,000 lb. Fork Lift



KAWASAKI Front End Loader



CATERPILLAR 15,000 lb. Fork Lift



INGERSOLL RAND Air Compressor



Truck



View of Wood Shop

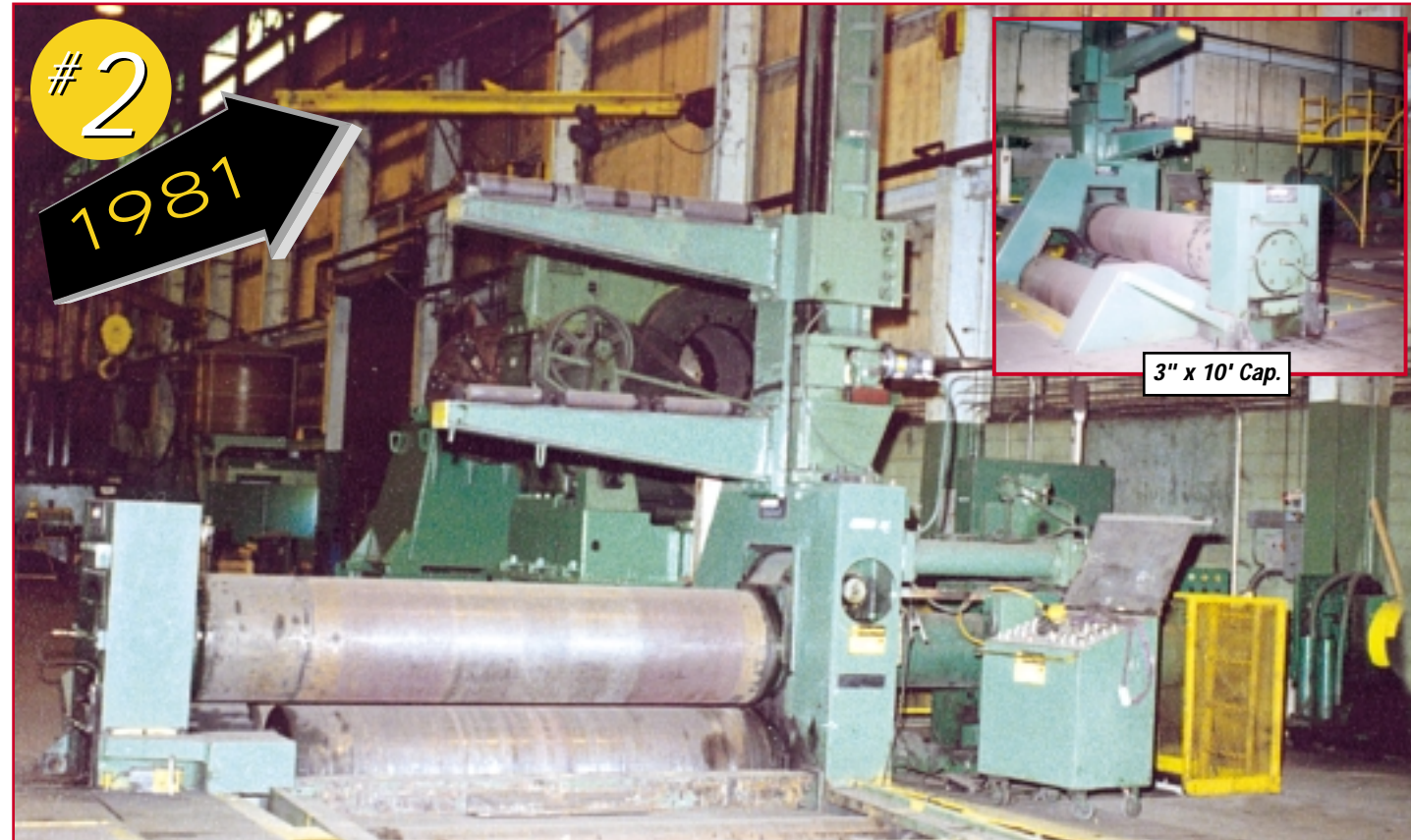
TERMS

Sale Conducted by Bid/Up. Subject to our customary terms of sale, (Available at the auction site on the day of the sale), and any and all amendments and modifications announced by the auctioneer at the time of the auction. The auctioneer and seller make no warranties or guarantees, expressed or implied, as to the defects in or the correctness or accuracy of the descriptions in any advertising of any item(s) being auctioned and will not be responsible for any advertising discrepancies or inaccuracies of any kind. All items sold will be on an "AS IS", "WHERE IS", and "WITH ALL FAULTS" basis "WITHOUT EXCEPTION" and "WITH REMOVAL AT BUYER'S RISK AND EXPENSE". AUCTIONEER AND SELLER MAKE NO WARRANTIES OR GUARANTEES OF ANY KIND, EXPRESSED OR IMPLIED AS TO THE NATURE, QUALITY, VALUE OR CONDITION OF THE ITEM(S) BEING AUCTIONED OR ITS (THEIR) SUITABILITY FOR ANY USE. AUCTIONEER AND SELLER EXPRESSLY AND SPECIFICALLY DISCLAIM WITHOUT LIMITATION ANY WARRANTY OF MERCHANTABILITY OR FITNESS FOR A PARTICULAR PURPOSE. AUCTIONEER SHALL NOT BE LIABLE FOR SPECIAL, CONSEQUENTIAL OR INCIDENTAL DAMAGES. It shall be the buyer's obligation to verify information and descriptions of property prior to sale. Industrial Assets, Inc., and its advertising agency assume no liability for errors or omissions in this brochure. The auctioneer does not warrant the age, accuracy, genuineness, authenticity, description, weight, count or measure of any listings specified herein. Although it is not likely, auction sales are subject to cancellation or postponement, and sometimes items are withdrawn from the sale, kindly contact Industrial Assets, Inc., prior to travel as there will be no reimbursements. On the day of the sale, all successful bidders must immediately pay the full purchase price in cash, certified funds, cashiers check, wire transfer or company check with a letter from the buyer's bank guaranteeing unqualified payments to Industrial Assets, Inc. Your letter should be similar to the following: [Mr. "Customer Name" is a customer of this bank. This bank will guarantee unqualified payment to Industrial Assets, Inc. on the account listed herein up to the amount of \$_____]. This letter is valid until 30 working days after the auction sale. Company checks without letter from bank guaranteeing unqualified payment will not be accepted. The failure to make payment promptly shall be considered default and each lot or lots so purchased will be placed for resale. The buyer must pay the total invoice price for all the lots purchased before any removal can begin. All buyers must pay applicable sales tax (unless evidence of exemption is provided to auctioneer's satisfaction). Buyers are responsible for the transportation, associated costs and risks involved in the removal of purchased item(s). Certain items may contain residual chemicals and/or hazardous materials. The purchaser(s) hereby indemnify and hold harmless the auctioneer and seller from any and all damages, claims or liability from any injuries to persons or property of any type whatsoever caused during the sale of, during the removal, or during use or operation of the purchased item(s). If you are unable to attend, please contact us regarding placing a proxy bid. ALL ITEMS SUBJECT TO PRIOR SALE. PLEASE NOTE: All sales are subject to a 10% buyer's premium.

AUCTION 2 • JUNE 13 • McNALLY MANUFACTURER • PITTSBURG, KS



GRAY 16' CNC Vertical Boring Mill (Remanufactured 1999). Over 2 Million Dollars Replacement.



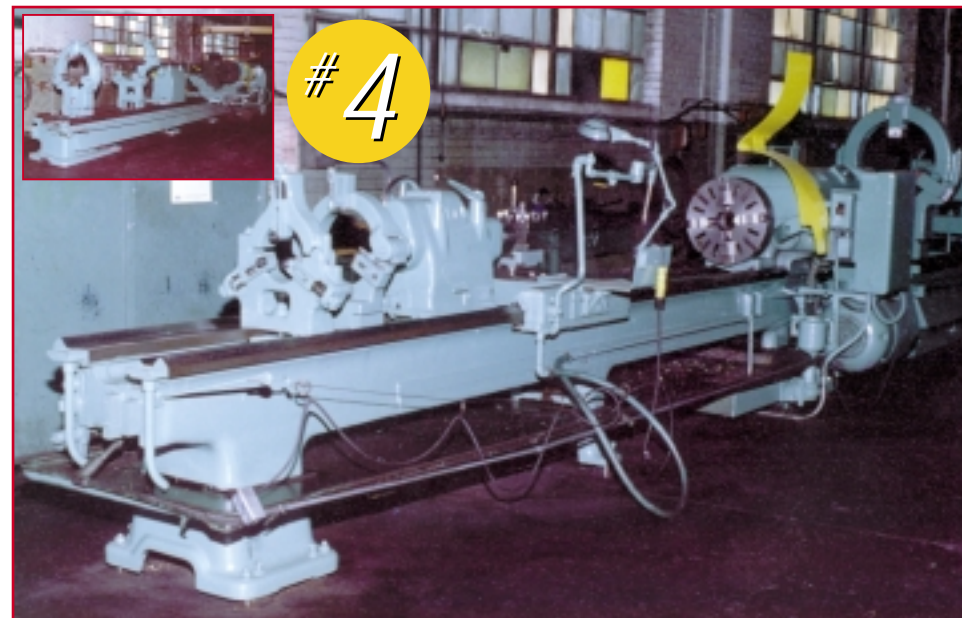
BERTSCH No. 32 Hydraulic Drive Initial Pinch Type Roll. Over 1 Million Dollars Replacement.

AUCTION 2 • JUNE 13 • McNALLY MANUFACTURER • PITTSBURG, KS



UP TO 27' SWING

BERTHIEZ Convertible Type Vertical Boring Mill



AMERICAN "PACEMAKER" Lathe

FEATURE ITEMS

- #1 GRAY "CNC" VBM, 16' Table, 17' Swing, 2-Swivel Rail Hds., 8-50 RPM, 147" Under Rail, Remanufactured 1999 w/Mitsubishi (Meldas 500L Series Control 100 Hp. DC Drive w/ AC Control) 2 Million Dollar Replacement Value).**
- #2 1981 BERTSCH Hydraulic Drive Initial Pinch Type Roll. 3" x 10' Capacity, Front & Rear Elevating Entry Tables, Squaring Arm and Overhead Support Roll System. 1 Million Dollar Replacement Value).**
- #3 BERTHIEZ Convertible Type VBM, 148" Table, 27'-6" Max. Swing, 110" Under Rail, Swivel Rail Hd. and Swivel side Hd., 0-45RPM, Taper and Threading, S/N 2103.**
- #4 AMERICAN "PACEMAKER" Lathe, 60" Swing Over Bed, 21' Centers, 6 to 600 RPM, Threading & Steady Rests.**

VERTICAL BORING MILLS

- KING 36" U.T.L., 8.2-245 RPM, Rail Turret and Sidehood, 4-Jaw ChUck, 30 HP-230/460/3/60, S/N 3318 Lot 444.**
- KING 96" VBM, 105" Swing, 78" Under Rail, 0-30 RPM, 2- Swivel Rail Hds., W&S Servo Drive 240/480/3/60.**
- KING 62" VBM, 68" Swing, 52" Under Rail, 3-110 RPM, 2-Swivel Rail Hds., Side Hd., Tracing Attach for R.H. Rail Hd., 4- Jaw Chuck, 40 M.P.-220/440/3/60**
- G&L 72" VBM, 78" Swing, 79" Under Rail, 3.8-333 RPM, L.N. Swivel Rail Hd., R.H. Rail Turret Hd., Side Hd. w/4-Way Tool Post, Syncro Turn Tracer on L.N. Rail Hd. S/N 7700.**
- (2) NILES-BENNET-POND VBM. 116" Tbl., 148" Swing, 2-Swivel Rail Hds., "Synro Turn" Tracer on R.H. Head, 18 RPM, 2-Available 1 Machine is 82 3/4 Under Rail, 1 Machine is 101" Under Rail.**

HORIZONTAL BORING MILLS

- CINCINNATI GILBERT, 3 1/2" Spdl., 12-700 RPM, 53"x 78 1/2" Tbl., 49" Vert. Trvl., 2 Axis SONY DRO, S/N 372.**
- CINCINNATI GILBERT, 3 3/4 Spdl., 12-700 RPM, 53"x 104" Tbl., 74" Vertical Trvl., 2 Axis SONY DRO.**
- 1982 LUCAS MDL. 30DCP76, 48" x 86" Tbl., 84" Cross Trul., 72" Vert. Trvl., 12-1200 RPM, No. 50 Spdl. Taper, S/N 30DC0706.**
- GRAY MDL. 660 FC Floor Type, 6" spdl., 900 RPM, 20' Horiz. Trvl., 36" Column In & Out Trul., 48" Spdl. Strk., 8' x 20' Fee Slotted Floor Plate, 4 x 20' x 30" High Tee Slotted Work Table, 3-Axis DRO, R.A. Milling Attachment, S.S. Roll Up Covers, 60 H.P. Spdl. Drive S/N 9554.**

CNC MACHING CENTERS

- HILLYER, MDL. TC-60 D, Bridge Type, 40" x 64" Tbl., 30 Tool Capacity ATC, 60-3500 RPM, BANDIT III CNC Control.**
- K&T Horiz. Machinging Center 4-2400 RPM, 360 Posit. Rotary Table, S/N 5177010.**

AUCTION 2 • JUNE 13 • McNALLY MANUFACTURER • PITTSBURG, KS

AUCTION 2 • JUNE 13 • McNALLY MANUFACTURER • PITTSBURG, KS

ENGINE LATHES

LEBLOND "Knight 30" CNC Flatbed, 3" Hole Thru Spdl., Twin Turrets, A/B Series 9 Control, Chip Pan, Coolant, Chip Conveyor.

BOEHRINGER "UDF", 28" x 120", 7.1 to 1400 RPM, 3 1/4 Hole Thru Spdl., 3 & 4 Jaw Chucks, Q.C. Tool Post, Stdy. Rest, Rapid Traverse, S/N 5462.

LODGE & SHIPLEY 20" x 156", 21-1182 RPM, Threading, Stdy. Rests, 4-Way Tool Post, 4-Jaw Chuck, Chip Pan and Coolant, S/N 42661.

NILES Facing and Turning Lathe, 18" Swing x 71" Max Centers, 2- Facing and Turning Slides, 36" Hole Thru Spindle, 0-16 RPM, 40 H.P. Drive.

SIDNEY 16" x 48" Lathe, Equipped w/Threading, Taper, Stdy. Rest, Chip Pan, 3 & 4Jaw Chucks S/N 54659.

AMERICAN STYLE "B", 14" x 126", 23-1500RPM, Threading, Taper, 4-Way Tool Post, Stdy. Rests, Chip Pan, Coolant, 4- Jaw Chuck, S/N 77898/66.

TURRET LATHES

J&L NO. 5, 2" Collet Cap., 4- Way Tool Post, Hox Turret and Hyd. Bar Feed, S/N 200151.

W&S No. 2A Sq. Hd., M-3470, Cross Sliding Turret, Power Wrench Chuck, 3 3/4" Hole Thru Spdl., 30 HP-220/440/3/60 S/N 1,405,211.

W&S No. 4A Sq. Hd., Lor Hd., Gear Box Lead Screw Threading, Power Wrench Chuck, Taper or Cross Slide, 25 HP A/C, S/N 553,299.

VERTICAL MILLS

BRIDGEPORT "J" HEAD, 9" x 42" Table, Servo P.F., 1HP, S/N J-28940.

BRIDGEPORT "J" HEAD, 9" x 42" Table, Servo P.F., Right Angle Milling Attachment, 1 HP, S/N 176747.

PLAIN HORIZONTAL MILL

HITACHI NO. 4 PLAIN HORIZONTAL MILL, w/ Universal Vertical Swivel Hd. Attachment, S/N 713550-6.

DUPLEX MILL

CINCINNATI Horizontal Duplex Mill, 12" x 62" TOL., S/N 35932.

JIG MILLS

DEVLEIG MDL. 4K-96, 4" Spdl., 40" x 96" Tbl., 96" Tbl. Trvl., 60" Vert. Trvl., 14-1450 RPM, BENDIX Positioning Control, S/N 9478.

DEVLEIG MDL. 4B-72, 4" Spdl., 72" Tbl. Trvl., 60" Vert. Trvl., 36" x 72" Tbl. 21-1000 RPM, S/N 8-199.

(2) **DEVLEIG**, 40" x 50" Sub-Tables. SEVERAL SETS of DEVLEIG Angle Plates.

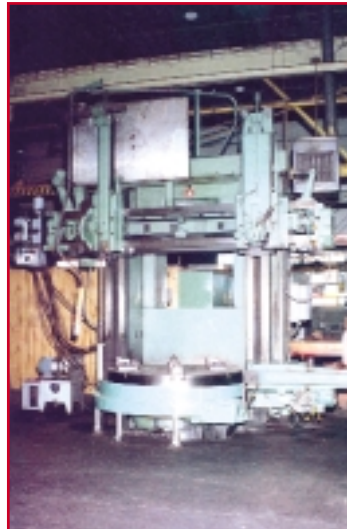
PLANER MILL

INGERSOLL Planer Mill, 36" x 18" Tbl., 2- Side Hds., 1-Rail hd., w/ #50 Spdl. Tapers, 6-595 RPM, 30 H.P.

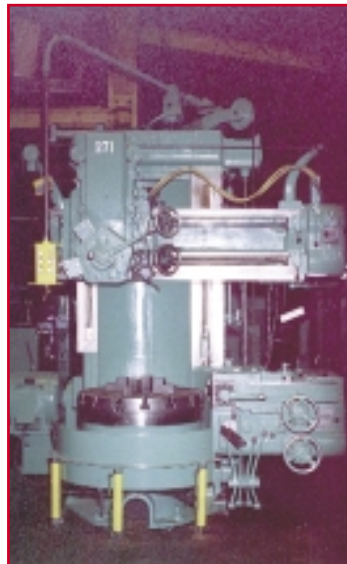
OPENSIDE PLANER

GRAY OPENSIDE PLANER, 56" x 194" Tbl., 2-Rail & 1- Side Hd., 60" Under Rail, S/N 8347.

VISIT OUR WEB SITE FOR UPCOMING AUCTIONS:
www.biditup.net



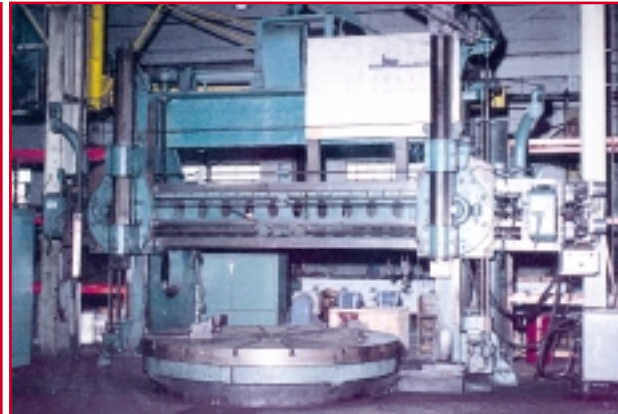
GIDDINGS & LEWIS VBM



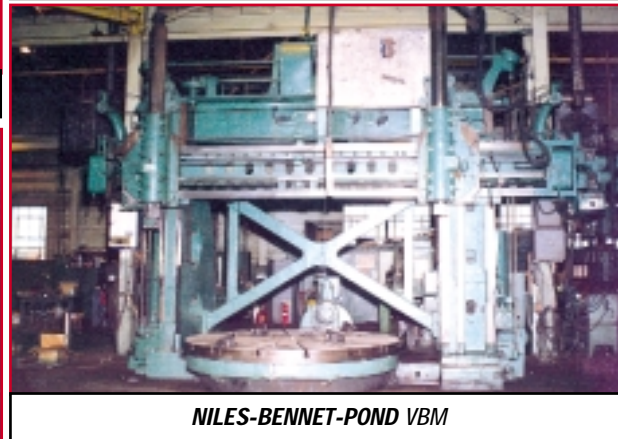
KING VBM



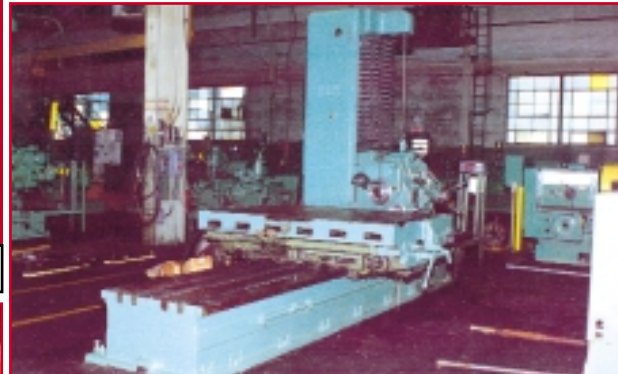
KING VBM



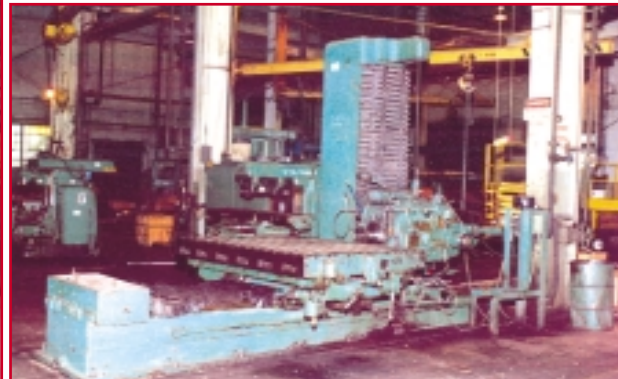
NILES-BENNET-POND VBM



NILES-BENNET-POND VBM



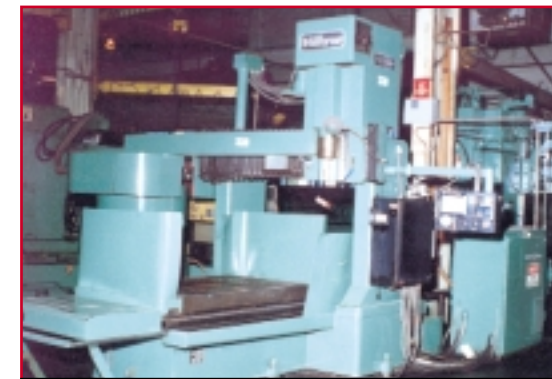
CINCINNATI GILBERT HBM



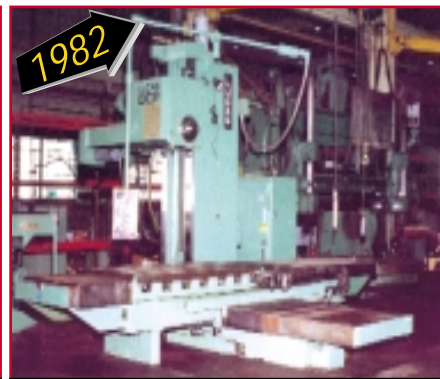
CINCINNATI GILBERT HBM



GRAY Horizontal Boring Mill



HILLYER CNC Drill



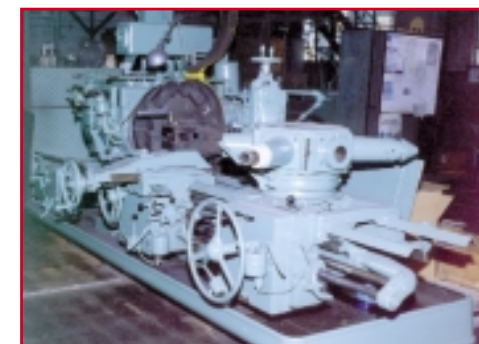
LUCAS Horizontal Boring Mill, MDL. 30DCP76



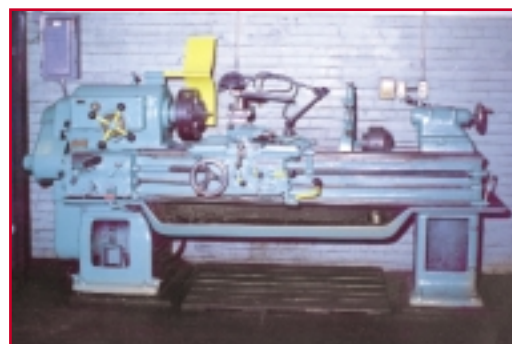
LEBLOND CNC Lathe



K&T Horizontal Machining Center



W&S Turret Lathe



SIDNEY Engine Lathe

biditup!
www.biditup.net
e-mail: info@biditup.net
Tel: 818.508.7034
Fax: 818.508.3025

RADIAL DRILLS

G&L BICKFORD 7' x 19" "Chipmaster", 125-1500, All Power, "L" Base, 24" x 30" x 21" Hi. Box Tbl., S/N 956-00209-70.

CARLTON 6'-19", 15 H.P., S/N 1574.

CARLTON 5' x 17", 12-1200 RPM, Power Clamping, Power Hd. Truc, S/N 3A-3020.

CARLTON 8' x 9", 15-1500 RPM, All Power, "L" Base, 28" x 32" x 24" Hi. Box.Tbl. Coolant, S/N 4A-5991.

DRILLS

DELTA Floor Drill 13" x 15" tbl. 110/1/60.

(2) **DURACRAFT** Floor Drills, 12" Dia. Table, 110/1/60.

WILTON Type 24500, Floor Drill w/ 11" x 25" Two Axis Table, 85 to 1460 RPM, Power Feed, S/N 61162.

CRAFTSMAN Floor Drill 10" Sq. Tbl., 115/1/60. FLOOR DRILL PRESS 9 3/4" Sp. Tbl., 1/2 HP 115/1/60, Coolant.

PRESSES

ENERPAC Portable Horizontal Wheel Press, 250 Ton, 6'-4" Between Strain Bars, 16" Max. Ram to Resistance Member, High Pressure ENERPAC Hydraulic Power Pack.

PLATE ROLLS

1981 BERTSCH NO. 32, Hydraulic Plate Roll, Capacity-3' x 10', Roll Length 122", Roll Diameters-Lower (2) 31" Dia., Upper-29" Dia., All Rolls Driver w/ Front & Rear Elevating Tables 20' Lg., Swing Arm and Overhead Support Roll System, S/N M-10465. Over 1 Million Dollars Replacement.

WEBB MDL. R3LR, Initial Type Plate Roll, 6' x 1/4" Capacity, 6'-2" Roll Length, S/N 5733

TANK TURNING ROLLS

(4) Sets **ARONSON** Tank Turning Rolls Drivers and Idlers, 60 Ton Capacity, Rubber Covered Wheels.

IRON WORKER

METALWORKER MDL. 6 Hydraulic Iron Worker, Shearing-6 x 6 x 1/2", 2 3/16" Rounds, 1/2" x 14" Flats Notches- 31/4 x 31/4 x 1/2", Punches 1 1/16 Hole Thru 1" THK. Assortment of Tooling, S/N 522156.

PIPE THREADERS

OSTER MDL. 784 Pipe Threader, 4" Pipe and 3" Bolt Capacity, S/N 784TV-233.

RIGID #300 Pipe Threader, w/ Dies & Cut-Off.

KEYSEATERS

MITTS & MERRILL MDL. 6-Her, Hydraulic Keyseater, w/ Assortment of Guides & Bars, S/N KM-7942.

FROMAG Type KZ32/250 Keyseater, S/N 7085-ASKI.

SHEARS

PROMECAM 6' x 1/4" Hydraulic Squaring Shear.

PRESS BRAKES

PACIFIC MDL. 500-16 Hydraulic Press Brake, 16' Bed & Ram, 14' x 1/2" Rated, S/N 3829.

PROMECAM 40 TON Hydraulic Press Brake, 78" Bed & Ram, 16" Throat w/ Back Gauge.

AUCTION 2 • JUNE 13 • McNALLY MANUFACTURER • PITTSBURG, KS

GEAR CUTTERS

G&E Gear Cutter 73" Max. Swing, 16" Max. Face Width, OutBoard Support, Lg. Qty. of Tooling w/ Arbors up to 2" DIA., S/N 2113A-2.

SHAPER

CINCINNATI 28" Hvy. Duty Shaper, w/ Vise, S/N 22029.

ROTARY TABLES

ARONSON MDL. FT-90, Power Rotary Table, 84" Dia Table, 90,000 lb. Capacity.

HEAT TREAT FURNACES & OVENS

STRESS RELIEVE FURNACE, Rail Car Platform, w/ Car Puller, 1150°F, w/ Controls, Readouts & Recorder.

GRIEVE Oven MDL. HX 500, 230 Volt, 6KW, Interior 36" W x 24" H x 20" DP, S/N 23199.

THERMOLYNE MDL. F-A1730, 240 Volt, 5.8 KW, 2000°F Max., Interior 10" W x 8" H 12" DP.

SAWS

DoAll 26" Vertical Contour Saw, w/Wldr. Grinder, S/N 2642562.

WALTER Horiz. Draw Cut Power Hack Saw, Approx. 10" x 14" Capacity.

MARVEL Series 8 MK., 1 Vertical Tilt Column Band Saw, S/N 821411-W.

MARVEL #81, MDL 81MM3M/MS/S, Entry & Exit Conveyors, Power Tilt.

PLASMA CUTTER

MG SYSTEMS CNC Burning Table, 14' x 40' Capacity, (4) Oxy Acetylene Torches plus (1) Plasma, S/N TMC3514P-90-2133.

SYSTEMS 80 CNC Control (updated 1999), Thermal Arc "PAK45" Plasma Power Supply, 400 Amp. Complete with Water Table, S/N R03024A-119803K.

OVER 50 WELDERS

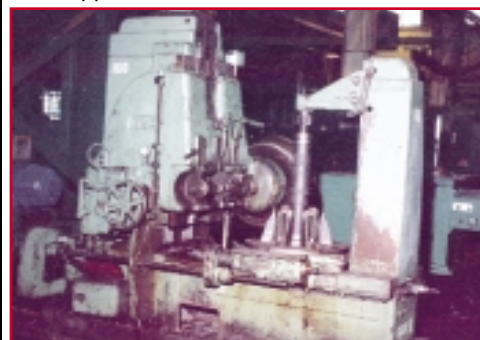
WELDERS-HOBART, LINCOLN & LINDE & MILLER, 250 to 600 Amp Power Supplies, MIG & TIG, On Carts w/ Wire Feeders and Accesories Including BERNARD Booms.

TRACK TORCH (Straight Line) With Accesories.

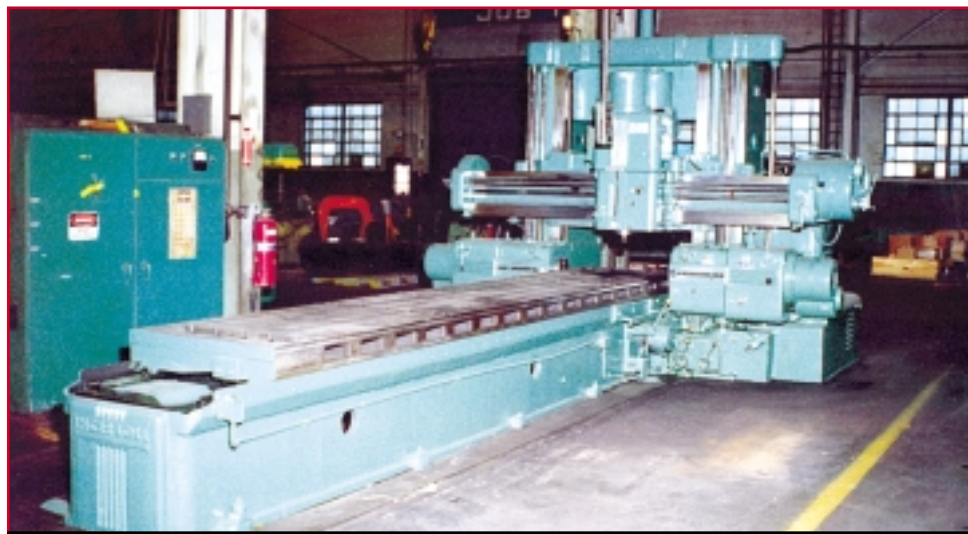
WELDING EQUIPMENTS

WELDING LAYOUT TABLE 110" x 200", 3/8" K'Ways & Hold Down Holes.

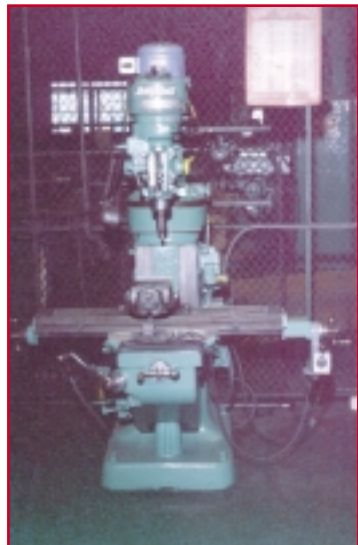
(11) ACORN Welding Tables, (7) 30" x 60" on Stands, (4) 60" x 60" on Stands.



G&E Gear Cutter



INGERSOLL Milling Machine



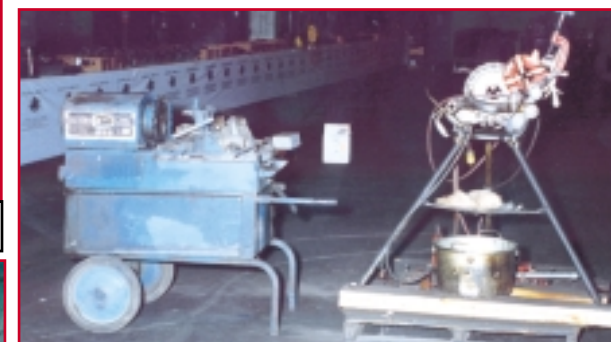
BRIDGEPORT Vertical Milling Machine



CARLTON Radial Drill



WEBB Plate Roll



OSTER Pipe Threader



MITTS & MERRILL Hydraulic Keyseater

AUCTION 2 • JUNE 13 • McNALLY MANUFACTURER • PITTSBURG, KS

WELDING POSITIONERS

ARONSON MDL. SHD 240A, Welding Positioner, 24,000 lb. Cap., 54" x 54" Tilting Table, S/N 78179.

ARONSON MDL. SHD 100A, Welding Positioner, 10,000 lb. Cap., 48" x 48" Tee Slotted Table, S/N 78376.

ARONSON MDL. HD 100A, Welding Positioner, 10,000 lb. Cap., 48" x 48" Table w/ 3-Jaw Chucking Fixture, S/N 80439.

WEBB MDL. R25, Welding Positioner, 2,500 lb. Cap., 40" Dia., Table w/ 3-Jaw Chucking Fixture, S/N 75157.

WORTHINGTON MDL. 25, Welding Positioner, 2,500 lb. 32" x 32" Table.

RANSOME MDL. 5-1, Welding Positioner, 26" Dia Table, 500 lb., w/ 3-Jaw Chucking Fixture.

WELDING MANIPULATORS

1978 ARONSON Welding Manipulator, MDL. S12VRA12CL-UKVT-14, 145" Vert. Trvl., 144" In & Out Trvl., Max Reach-194" Above Floor, 162" Boom Reach w/ LINCOLN Sub-Arc Weld System, 100" Floor Travel, S/N 78191.

1978 ARONSON Welding Manipulator, MDL. 14VRA4CLVKUT-14, 168" In & Out Trvl., Max Reach-196" Above Floor, 186" Boom Reach, 100" Floor Travel, w/ LINCOLN Sub-Arc Weld System.

CRANES

(20) 1 & 2 Ton Post Mtd. Swing Jib Cranes w/ Electric Hoists.

KELLEY 3 Ton Electric Hoist & Tram Rail System, Free Standing w/Uprights & Rails, 15' Span, 90' long.

AIR COMPRESSORS

(2) INGERSOLL "AIR CUBE" 75 H.P. S/N's 18LL2CRRICA & 18LL2C2R1CA2093.

INGERSOLL MDL. 777 Air Dryer.

QUINCY Tank Mounted Air Compressor, 5HP A/C.

JOY Portable Diesel Air Compressor

GRINDERS

(2) CINCINNATI No. 2 Tool & Cutter Grinders, w/ Tooling, S/N's 1D2T1K-62 & 31512T5W-108.

HAMMOND Dbl. End Carbide Grinder, MDL. 14-WD-C, S/N 11691.

HAMMOND Dbl. End "Chip Breaker" Grinder, MDL. CBW-6, S/N 2013.

OLIVER No. 600 Drill Grinder, S/N G-7117.

(4) CINCINNATI Pedestal Grinders, 2" W x 12 Dia. Wheels 480/3/60.

INGERSOLL Dbl. End Bench Grinder 1/2 H.P. 115/1/60.

FORKLIFTS

HYSTER 18,000 lb.

1997 CATERPILLAR, MDL. DP70, 15,500 lb. Capacity.

2001 CATERPILLAR MDL. DP50, 11,000 lb. Capacity.

2002 CATERPILLAR MDL. DP50, 11,000 lb. Capacity.

HYSTER 8,000 lb., Gas, Solid Tires, S/N C005023393C.

1970's CATERPILLAR, MDL. VBOE, 8,000 lb. Capacity.

1970's BAKER, MDL. FJO-090.

1972 HYSTER, MDL. 540F.

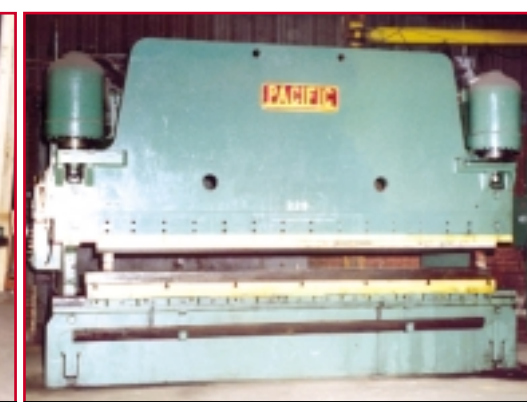
1960's HYSTER MDL. 194A.

1970's HYSTER MDL. H60H.

1970's HYSTER MDL. H110XL.



PROMECAM Hydraulic Squaring Shear



PACIFIC Hydraulic Press Brake



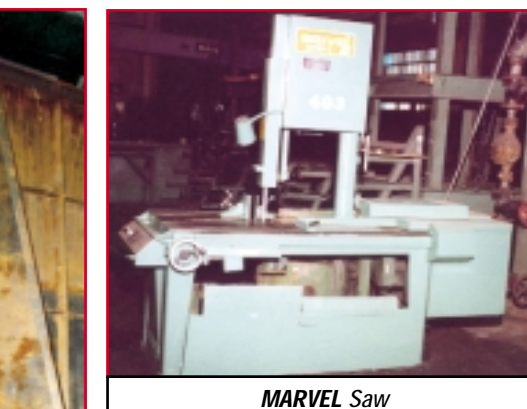
PROMECAM Hydraulic Press Brake



CINCINNATI Shaper



Car Bottom Furnace



MARVEL Saw



MARVEL Saw

AUCTION 2 • JUNE 13 • McNALLY MANUFACTURER • PITTSBURG, KS

ROLLING STOCK

CHEVROLET Semi-Tractor, MDL C65, VIN# CCE667V145217.
GMC MDL. 7000, Strt. Truck, VIN # 1CDL7D1BXEV527579, Tandem Axle, 20 ft. Bed.
CHEVROLET 3/4 Ton, VIN#1GCGC24MXF308911.
FORD 1/2 Ton, MDL. F-100, VIN#F10EPHJ3364.
CHEVROLET MDL. S10, VIN#1GCCS14B0F2260193.
1989 FORD Flatbed Truck.
1984 DODGE 1/2 Ton Pick Up Truck.
1994 KOBELC Excavator, MDL. K907IC-II, w/ Grappler.
1992 BOBCAT Skid Steer, MDL. 742.
1987 CONDOR Manlift, MDL. 68, 60' Lift, Rated 800 lb.
1980's TENNANT Sweeper, MDL. G439A.
1994 KAWASAKI Loader, MDL. Y61175F.

MATERIAL HANDLING

LORAIN Rough Terrain Hydraulic Truck Crane, 10 Ton Capacity, 3-Storage Boom, Outriggers w/Diesel Engine, S/N 35684.
CONDOR "Calavor" Boom Type Man Lift, S/N 3170.
KEEDON 4-Stage Sissor Type Platform Lift, Battery.
SELMA 3-Stage Sissor Type Platform Lift, Battery.

MISC EQUIPMENT

(5) **AURORA** Dump Hopper, w/ Fork Lift Skids.
 (20) 1&2 Ton Post Mtd., Swing Jib Cranes, w/ Electric Hoists.



DOALL VERTICAL Contour Saw



MG SYSTEMS CNC Burning Table



HOBART Welders



WEBB Welding Positioner



JOY Air Compressor



View of Jib Cranes



ARONSON Positioner



ARONSON Positioner



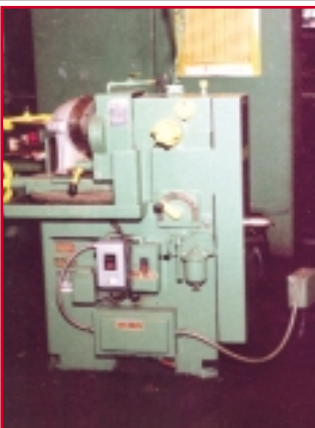
ARONSON Manipulater



INGERSOLL-RAND Air Compressor

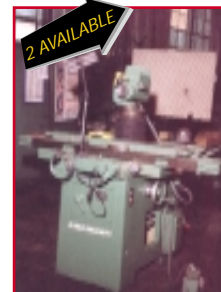


HAMMOND Tool Grinder, MDL. 14-WD-C

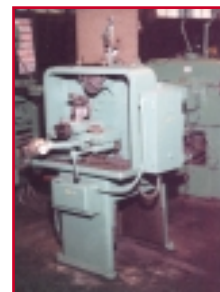


OLIVER No. 600 Drill Grinder

AUCTION 2 • JUNE 13 • McNALLY MANUFACTURER • PITTSBURG, KS



CINCINNATI Tool & Cutter Grinder



HAMMOND Grinder, MDL. CBW-6



View of Scissor Lifts



View of Forklifts



View of Truck



View of Truck



CONDOR Man Lift



View of Trucks



LORAIN Rough Terrain Hydraulic Truck Crane

REAL ESTATE TO BE AUCTIONED AT 1:00

9-1/2 Acres of Prime Industrial Real Estate, Including 150,000 SQ. FT. Industrial Building Equip with Overhead Cranes. Sale Subject to Confirmation.



5% Deposit will be Required of High Bidder.