

AUCTION

Thursday, December 14, 2006
Beginning at 11:00 AM PST
6027 S. Eastern Ave.
City of Commerce, CA 90040



WEBCAST
Can't attend the auction in person?
Bid live on www.BIDITUP.com

MULTI-LAYER PAPERBOARD MACHINE WITH 125 TPD OCC STOCK PREPARATION SYSTEM

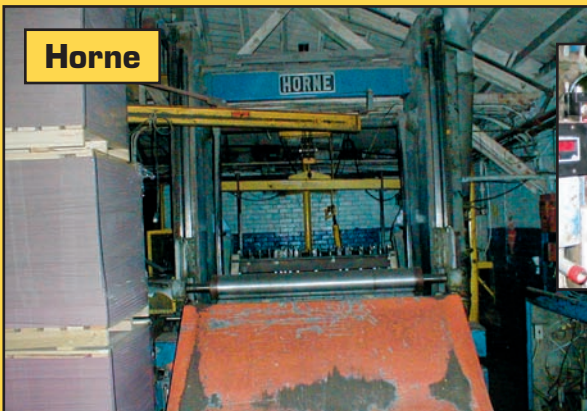
*Assets No Longer Required in the Continuing Operations of
LA Paper Box & Board Mills*



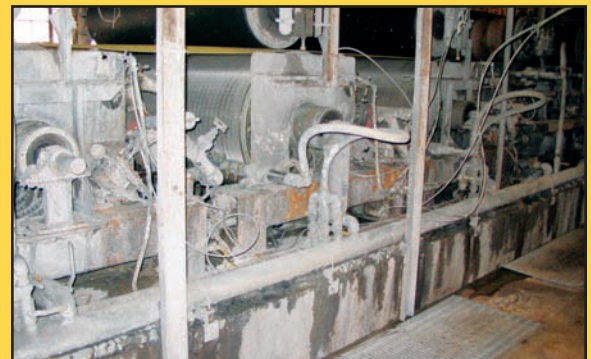
Bauer Hydrasieve Screen



Bird 400 Centrisorter



Horne Slitter Rewinder



Paper Machine Formers

- ▶ PAPER MACHINE
- ▶ PULPERS
- ▶ CLEANERS/SCREENS
- ▶ REFINERS

- ▶ ADDITIONAL EQUIPMENT
- ▶ SURPLUS MOTORS
- ▶ SHOP EQUIPMENT

- ▶ STORES
- ▶ PIPING
- ▶ INSTRUMENTATION

- ▶ VALVES
- ▶ STOCK PUMPS
- ▶ AND MORE

PAPER MACHINE, 125 TPD OCC SYSTEM AND MUCH MORE



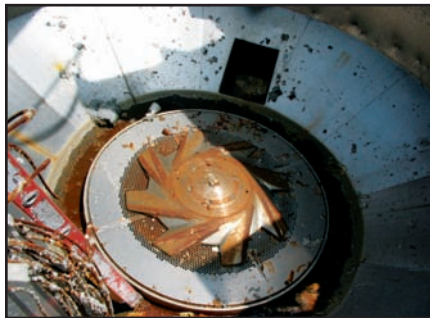
Horne Track Reel



Hydrocal Clarifier



Inside View



Pulper Rotor



Nash Vacuum Pump



Pulper Conveyor



SS Pulper, Bottom View

PAPER MACHINE

67" Trim width (2640 mm) Paperboard machine capable of producing 85 TPD. Up to 9 layer of 100 – 180 lb/3300 sq.ft. (160 – 290 gsm) boxboard, chipboard, and manila board at 360 FPM (110 MPM). Consists of the following:

- (4) Horne 36" diameter Pressure Formers with couch rolls and showers
- (5) 36" diameter counter-flow vats
- (9) Bird model 10 Stainless steel Centriscreens
- 300 PLI main press with (2) felt guides and vacuum pump
- (2) Venta-Nip presses rated for 200 PLI, with vacuum boxes
- DGI hydraulic, heated press rated for 160 PLI
- DGI Yankee-type dryer with bow rolls, rope system, showers, and stretchers
- (53) 36" diameter national board certified dryer cans
- Impact Infra-Red dryer
- Farrell 70" wide 5-roll wet calender stack
- Farrell 70" wide 4-roll dry calender stack
- JH Horne track reel with 36" diameter x 77" long drum
- Online rotary knife sheeter
- JH Horne 80" wide, 1800 FPM 2-drum slitter rewinder. 72" OD Roll diam.
- Vooner vacuum pump
- (2) Nash CL 2002 vacuum pumps

125 TPD OCC SYSTEM

Approximate 125 TPD complete OCC System consisting of the following major components:

PULPERS

- 14' diameter Stainless Steel Pulper with Vokes style rotor, ragger, junker, 250 HP motor, and stock pump
- 12' diameter stainless steel lined pulper with defibring ring, loading table, and pump
- 12' diameter stainless steel lined pulper with extraction plate, loading table, and pump
- 8' diameter stainless steel Morden Slushmaker with side entering rotor and pump

CLEANERS/SCREENS

- Black Clawson size 17 high consistency cleaner
- Bird model 24 vibrating Jonsson screen with 1/8" holes
- Black Clawson Hydraflaker with 150 HP motor
- (2) Bird model 400 pressure screens with 100 HP motors
- 9,200 gallon stainless steel white water tank
- 48" diameter x 120" long decker with stainless vat and rubber couch roll
- Hydrocal 440 GPM air flotation unit
- Dorr Oliver DSM screen

REFINERS

- Sprout Waldron 26", model R26EMA Twin-Flo refiner with motor
- Sprout Waldron 20", model R20 EMA Twin-Flo refiner with motor
- Sprout Waldron 12" Twin-Flo refiner with motor



Thickener



SW Refiners

3 AVAILABLE

DGI Press



Pulper Ragger



DGI

**ON-SITE &
WEBCAST
AUCTION**

*Can't make it to the
auction in person?
Bid live online at
www.BIDITUP.com*

For Lease & Finance Services-BIDITUP Capital Corporation

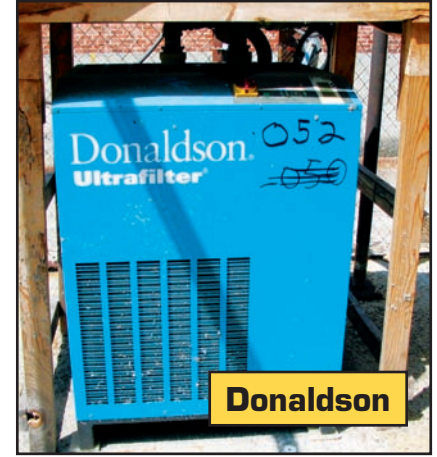
LA PAPER BOX & BOARD MILLS



Numerous Stock Pumps



Slushmaker Pulper



Donaldson Ultra Filter Air Dryer



Calender Wet Stack



Clam Shell Ragger



Stainless Steel Tanks

ADDITIONAL EQUIPMENT

- Combustion Engineers 700 HP water tube boiler (re-tubed 2004)
- Ionic 50 GPM reverse osmosis unit
- Zeolite water softener
- 50 HP Ingersoll Rand mdl. HHP50-PE 205 CFM @ 150 PSI compressor
- 75 HP Ingersoll Rand mdl. SSR-EP75 320 CFM @ 125 PSI compressor
- Donaldson mdl. SD Ultra Filter air dryer
- Stainless Steel Tanks/Agitators



Refiner Motor



Dorr-Oliver Screen

DIRECTIONS

To: LA Paper Box & Board Mills from LAX

Go east on World Way/Center Way and merge onto S. Sepulva Boulevard (CA-1) south, then onto I-105 East toward Norwalk. Get onto I-710 North toward Pasadena to exit 15 for Florence Avenue toward Bell. Go right onto Florence Avenue then an immediate left onto Eastern Avenue. After about 1 mile, make a U-turn at Peachtree Street onto S. Eastern Avenue.

LODGING

- Ramada Inn Limited**
7330 Eastern Avenue
Bell Gardens, CA.....562-928-3452
- Wyndham Garden Hotel Commerce**
5757 Telegraph Road
Los Angeles, CA 90040.....323-887-8100
- Crown Plaza Hotel Commerce Casino**
6121 Telegraph Road
Los Angeles, CA 90040.....323-728-3600

LEASE/FINANCING

**AVAILABLE
DIRECT FROM
BIDITUP
Capital Corporation**

Call 818.508.7034

**LIVE
ON-SITE &
WEBCAST**

MACHINERY AUCTION

December 14, 2006

MULTI-LAYER PAPERBOARD MACHINE WITH 125 TPD OCC STOCK PREPARATION SYSTEM

*Assets No Longer Required in the Continuing Operations of
LA Paper Box & Board Mills*

AUCTION:

Thursday, December 14, 2006
Beginning at 11:00 AM PST

PREVIEW:

Wednesday, December 13, 2006
9:00 AM to 4:00 PM PST

LOCATION:

6027 S. Eastern Ave.
City of Commerce, CA 90040
(See Inside for Directions & Lodging)



Stock Pumps



Switchgear

FOR THE COMPLETE TERMS & CONDITIONS OF THIS AUCTION
Please visit our website - www.BIDITUP.com - and click on LA Paper Box & Board Mills

NOW OFFERING IN-HOUSE FINANCING & LEASING. CALL 818.508.7034



View of Surplus Motors



Bauer Hydrasieve Screen



Paper Machine Formers



IR Compressor



IR Compressor

*Assets No Longer Required in the
Continuing Operations of*

LA Paper Box & Board Mills

Thursday, December 14, 2006
City of Commerce, CA

For a Complete Listing of Upcoming Auctions,
Visit www.BIDITUP.com. Register Online and Receive
Auction Updates & Information via E-Mail



WEBCAST

Can't attend the auction in person? You can participate and bid in real time via the Internet. Preview assets with detailed digital photos, lot catalogs, and in-depth descriptions. For more information, visit www.BIDITUP.com

Please note, all webcast participants must submit a 25% deposit and signed registration forms no later than 24 hours before a sale.