

**BIDITUP™**  
AUCTIONS & APPRAISALS WORLDWIDE

**LIVE ON-SITE**

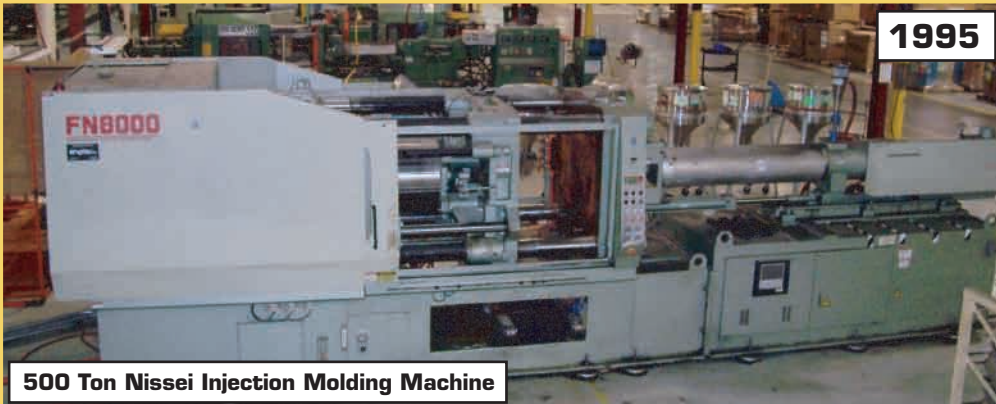
# AUCTION

**Wednesday, August 17, 2005**  
**Beginning at 10:30 AM EDT**  
**2401 20th Street,**  
**Port Huron, MI 48060**

**REAL ESTATE TO BE AUCTIONED AT 1:00 PM EDT**



**105,000 Sq. Ft. Bldg**  
**ADDRESS:**  
**2401 20th Street,**  
**Port Huron, MI 48060**



**500 Ton Nissei Injection Molding Machine**



**200 Ton Cincinnati Vector Dual Mold Injection Molding Machine**

*Assets No Longer Required By*

## **DUALEX, INC.**

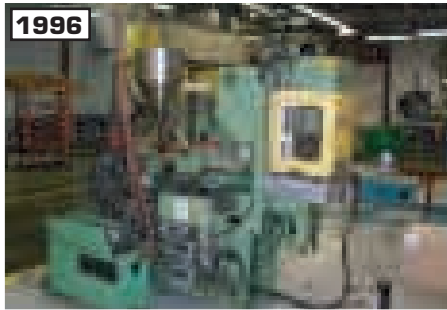
**A DIVISION OF DEPCO INTERNATIONAL**

### **An Integral Source For Extruded Products And Plastic Injection Molded Parts**

- ▶ Injection Molding Machines
- ▶ Chilling System
- ▶ Batch Blender
- ▶ Pullers
- ▶ Drying & Material Hoppers
- ▶ Chillers
- ▶ Thermolators
- ▶ Granulators
- ▶ Plastic Pelletized Material
- ▶ Portable Drying Units
- ▶ Temperature Controls
- ▶ Extruders
- ▶ Material Conveyors
- ▶ Straight Side Double Crank Presses
- ▶ Cut-Off Presses
- ▶ Pneumatic Presses
- ▶ Coil Feeding Equip./ Servo Feed Line
- ▶ Overhead Cranes
- ▶ Staking Presses
- ▶ Tool Room & Inspection Equip.
- ▶ Forklifts
- ▶ Compressors
- ▶ Welders
- ▶ And Much More!

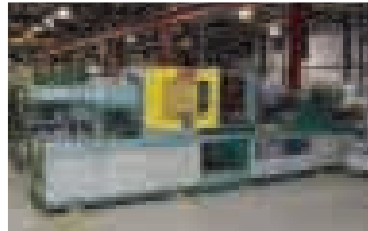
**BIDITUP AUCTIONS & APPRAISALS WORLDWIDE**  
**WWW.BIDITUP.COM**

# VERTICAL INJECTION MOLDING MACHINES, HORIZONTAL INJECTION MOLDING MACHINES, CHILLING SYSTEM, INJECTION MOLDING SUPPORT, PULLERS, DRYING HOPPERS, MATERIAL HOPPERS, CHILLERS, THERMOLATORS



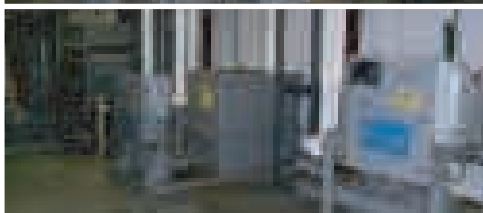
200 Ton Cincinnati Vector Dual Mold Injection Mold

Arburg Injection Molding Machine



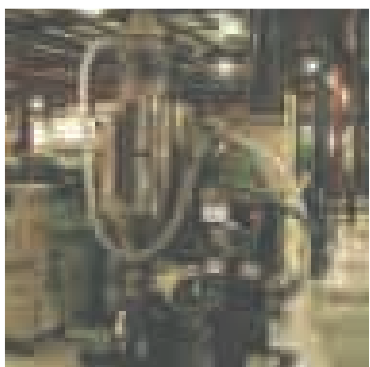
Nissei 500 Ton Injection Molding Machine

Nissei 210 Ton Injection Molding Machine



**2002 - Thermal Care Three Station Process Chilling System**

Thermal Care Three Station Process Chilling System



Conair Franklin Drying Hopper (Portable)



Conair Franklin Dryer



VanDorn 170 Ton Injection Molding Machine



IMS Portable Hoppers

## VERTICAL INJECTION MOLDING MACHINES

Yr 1995 - 200 Ton Cincinnati-Milacron, Mdl Vector WDCH-200-S, Platen 15" x 40"; Dual Mold Shuttle Table, Autojecters Matrix Control, Oversized Kawasaki/Staffa Barrel, S/N 3959A01/95-3 AJ002109-1295

Newbury Industries, Mdl V430ARS, 8" X 16" Plate, Shuttle Table, S/N 3763130A587

(2) Yr 1996 - Arburg 28 Ton, Mdl 221M/250-55, 1.5 oz. Shot, Mold Height 5.9", Daylight 19.7", Clamping Stroke 7.9", S/N 164049, 164437

## HORIZONTAL INJECTION MOLDING MACHINES

Yr 1995 - 500 Ton Nissei, Mdl FN 8000, 68.2 oz. Shot, 12.6" Stroke, 55" Daylight Open, 32" X 32" Dist. Btwn. Tie Rods, 47" X 47" Platen, Chip Conveyor, S/N S46T001

300 Ton VanDorn, Mdl 300-RS-14FVB, 14 oz. shot, Between Posts 24" x 24", Platen 36 1/2" x 36 1/2", Lot 75, S/N 1548

300 Ton VanDorn, Mdl 300-RS-30F, 30 oz. shot, Between Posts 20 1/2" x 20 1/2", Platen 35" x 35", S/N 567

300 Ton VanDorn, Mdl 300-RS-14FUS, 14 oz. Shot, 8" Clamping Stroke, 24" X 24" Dist. Btwn. Tie Rods, 36.5" X 36.5" Platen, S/N 1549

300 Ton VanDorn, Mdl 300-RS-30T, 30 oz. Shot, 11" Clamping Stroke, 20" X 20" Dist. Btwn. Tie Rods, 35" X 35" Platen, S/N 550, with Conair Dryer

(2) 300 Ton VanDorn, Mdl 300-RS-30F, 30 oz. Shot, 11" Clamping Stroke, 22" X 22" Dist. Btwn. Tie Rods, 37" X 37" Platen, S/N 751, w/ Conair Dryer

Yr 1992 - 230 Ton VanDorn, Mdl 230 RS-20F-HT, 20 oz. shot, Between Posts, 22" x 22", Platen 32" x 32", VanDorn Pathfinder Control, S/N 444

210 Ton Nissei, Mdl FS210S50ASE, 22 OZ. Shot, 22.5" X 22.5" Between posts, 32.5" X 32.5" Platen, S/N S21D026

(2) 200 Ton VanDorn, Mdl 200-RS 14F, 14 oz. shot, Between Posts 21" x 18", Platen 30 1/2" x 30 1/2", S/N 2286 & 2287

Yr 1992 - 170 Ton VanDorn, Mdl 170-RS-14F-HT, 14 OZ. Shot, 10" Clamping Stroke, 20" X 20" Between posts, 29" X 29" Platen, S/N 410, With Conair Dryer, Mdl 18207801, Franklin Integral Motor Loader Control

Yr 1991 - 85 Ton VanDorn, HT Series, Between Posts 16" x 13 1/2", Platen Area 22" x 20 1/2", VanDorn Pathfinder Control, S/N 243

85 Ton Toshiba, Mdl 1SP85N2, 4.58 OZ. Shot, 15" Clamping Stroke, 24.8" Daylight Open, 14.5" X 14.5" Between Posts, 22.75" X 22.75" Platen, S/N 822M46

Yr 1991 - 85 Ton VanDorn, Mdl 85RS-5F-HT, 5 OZ. Shot, 8" Clamping Stroke 13.5" X 13.5" Between Posts, 23" X 23" Platen, S/N 242

60 Ton Toshiba, Mdl 1SEP60, 3.63 OZ. Shot, 14.5" Clamping Stroke, 20.8" Daylight Open, 12" X 12" Between Posts, 19" X 19" Platen, S/N 815R06

## CHILLING SYSTEM

Yr 2002 - Thermal Care Three Station Process Chilling System: Process Chiller Unit Mdl TSW30, AB Panelview 600 Control, Temp Range 30-75 deg, Station 1: Process Pump 10 HP, Standby Pump 10 HP, Recirculating Pump 10 HP, Fiberglass Reinforced Polyester Tank, Chiller Pump 3 HP; Station 2: Process Pump 30 HP, Dual Standby Pump 30 HP, Recirculating Pump/Cooling Tower 10 HP, Tower Fan; Thermal Care Control Unit, Mdl TWC 1000, S/N 27021050102, Series CTP Biocide Pump, Series CTP Inhibitor Pump

## BATCH BLENDER

Yr 1999 - Conair Gravimetric Batch Blender, Mdl GB131, Max throughput 280 Lbs/Hour, #CM1CO1SA00000, S/N 82-892

## PULLERS

6" RDN Flat Belt Puller, Mdl 240-6, Belt Width 6", Contact Length 48", Variable Speed DC Drive, S/N 33548

Custom Downstream System Inc, 30" Length X 4" Wide Belt

K-OMAGA, 22 1/2" Length X 2 1/2" Wide Belt, 2 HP

## DRYING HOPPERS

Conair Franklin, Mdl CH22UAB, Inside Diameter 22", S/N 18207802AB / 28449

Yr 1998 Conair Portable Dehumidifying Unit, Mdl SC60, S/N 54-736

## MATERIAL HOPPERS

(5) IMS Portable Hoppers, "The Spiral Hopper", 24" Diameter x 18" Barrell Height

(4) Autoload Material Transfer Systems

## CHILLERS

Yr 1992 - Advantage, Mdl SC-3.5AY 21HP, S/N 16971, 3/4 HP, Temp 20-60

Yr 1997 - Advantage, Mdl 11C-4AYZ1HE, Capacity 4 Ton, Temp 20 - 70 Deg, S/N 31432

Yr 1997 - Advantage Icecube, Mdl IK-4AY-21HF, Temp. Range 48-70 Deg, S/N 31431

## THERMOLATORS

Yr 1994 - Advantage, Mdl S-1245-2101Y, Thermolator Water Temperature Controller, S/N 19532

TUC, Mdl WSU-1175, S/N 4599045

**TO SCHEDULE AN AUCTION OR APPRAISAL, CALL 818.508.7034**

**PLASTIC PELLETIZED MATERIAL, PORTABLE DRYING UNITS, TEMPERATURE CONTROLS, EXTRUDER-  
SMATERIAL CONVEYORS, STRAIGHT SIDE DOUBLE CRANK PRESSES, CUT-OFF PRESSES,  
PNEUMATIC PRESSES**



Conair Franklin Autoweigh Gravimatic Blender



Sterling Extruder

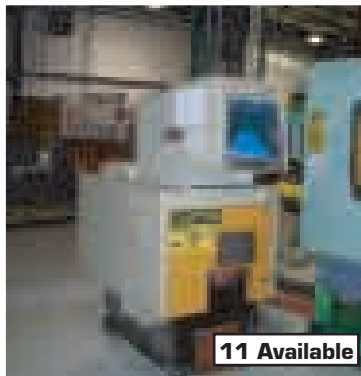


Advantage Chiller



Cumberland Granulator

**4 Available**



1988 Nelmor Granulator

**11 Available**

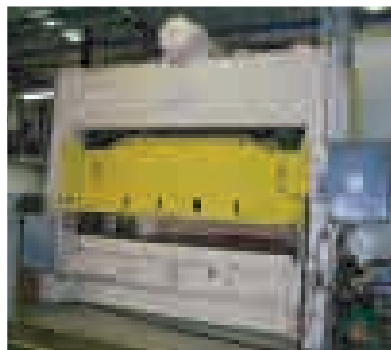


AEC Whitlock Dryer Control

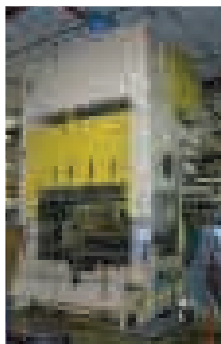


Plastic Process Equipment Conveyor

**2 Available**



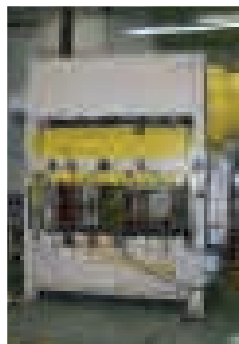
400 Ton Warco SSDC Press



300 Ton Verson SSDC Press



150 Ton Warco SSDC Press



100 Ton Niagara SSDC Press

**GRANULATORS**

Yr 1992 - Nelmor, Mdl RG1012P1, Opening 10" X 12", 7.5 HP, S/N 920330862

(3) Nelmor, Mdl RG1012M1, Opening 10" X 12", 10 HP, S/N 820617688, 830418678, 72075106

(2) Yr 1988 - Nelmor, Mdl RG1215M1, Opening 15" X 15", 10 HP, S/N 880126256, 880126257

(4) Yr 1991-93 - Cumberland, Mdl 8x12 3KN, Opening 8" x 12", Three Knife Open Rotor, 5 HP, Portable, Discharge Hopper, S/N 72400-93671, 72400-93672, 72400-93673, 72400-91540

Yr 1982 - Nelmor, Mdl M-RG810, Opening 8" x 10", Three Knife Solid Rotor, Two Bed Knives, 5 HP, Portable, Discharge Hopper, S/N 820718025

(3) Yr 1983 - Nelmor, Mdl RG1012M1, Opening 10" x 12", Three Knife Solid Rotor, Two Bed Knives, 10 HP, Portable, Discharge Hopper, S/N 830418679, 830418680, 830418681

Yr 1984 - Nelmor, Mdl RG1215M1, Opening 12" x 15", 15 HP, Portable, Discharge Hopper, S/N 840521174

**PLASTIC PELLETIZED MATERIAL**

Approx 40,000# of Pelletized Plastic Resins

**PORTABLE DRYING UNITS**

AEC Whitlock Material Dryer, Mdl DB200RJ, 2.5 HP Blow Motor, Temp Ranges from 35 Deg C to 243 Deg C / 95 Deg F to 470 Deg F, S/N 813030382

(3) Yr 1992 & 1984 - AEC Whitlock Material Dryer, Mdl WD50, S/N 92C0391, 93C0394 & 84-80541

(4) AEC Whitlock, Mdl DB200, S/N 7030519, 8130379, 8130378, 7830519

Yr 1984 - AEC Whitlock, Mdl DB200RT, S/N 8480591

(2) Yr 1992 & 1984 - AEC Whitlock, Mdl DB200FT, S/N 8436592, 9210392

Yr 1983 - AEC Whitlock, Mdl DB100, S/N 8330333

AEC Whitlock, Mdl 150-CL, S/N 7330481

**TEMPERATURE CONTROLS**

(4) Advantage, S-1245-21C1, Temp 30-250 Deg, S/N 6033, 6746, 19532, 16971

Osco Inc. Smart Series Instrument - Zone Temperature Inc, 12 Unit Control

**EXTRUDERS**

Sterling 2" Extruder, Mdl 2" 24-I, Gear Box Ratio 13.95, Screw RPM 100, Blower, Spectrum Control: Barrel 1, 2, 3 Temperature Control, Die 1 / Die Adaptor Temperature Control, S/N 20426

Delta Plast, Vertical 3' Length Screw, 3 Barrel Zones, 2 Die Zones, 5 HP

NRM, Vertical 64" Length Screw, 6 Die Zones, 4 Barrel Zones

Custom, 7 Barrel

Hartig/Midland-Ross, Vertical 3' Length Screw

**MATERIAL CONVEYORS**

(2) Plastic Process Equipment Conveyors, Mdl ICB-1806MSVS, Inclined Type, 18" Wide x 66" Long, Minarik Corp Motor Master 2000 Speed Control, S/N ICB1806VBVS15260201, ICB-1806VB14591099

**STRAIGHT SIDE DOUBLE CRANK PRESSES**

400 Ton Warco, Mdl 400-2-144C, Stroke 8", Strokes per Minute 30, Bed & Ram 48" x 144", Shut Height 20", Adjustment 5", Light Curtains, Windows in Uprights 37", Air Clutch & Brake, S/N 60P2123

300 Ton Verson, Mdl S2-300-84-48T, Stroke 18", Strokes per Minute 26, Bed 48" x 84", T-Slotted Slide, Shut Height 42", Adjustment 10" Motorized, Windows in Uprights 32", Trabon Automatic Lubrication, T-Slotted Bolster Plate 6", Air Clutch & Brake, S/N 15808

150 Ton Warco, Mdl S2-150, Stroke 16", Strokes Per Minute 30, Bed 54" x 96", T-Slotted Slide, Shut Height 40", Adjustment 6" Motorized, Windows in Uprights 20", Automatic Lubrication, T-Slotted Bolster Plate 4 1/2", Triad Brake Monitor, Floor Standing, Air Clutch & Brake, S/N 56-642-2

100 Ton Niagara, Mdl SC2-100-72-36, Stroke 10", Strokes per Minute 35, Bed & Slide 36" x 72", Shut Height 22", Adjustment 7", Floor Standing, Light curtains, 4 3/4" Bolster Thickness, Windows in Uprights 15", Air Clutch & Brake, S/N 39782

**CUT-OFF PRESSES**

Yr 1984 - 15 Ton Pneu Power Cut-Off, Mdl 4-P, 0-3" Stroke, 3"-12" Ram Height, 16" X 24" Between Post, S/N P-1107

Yr 1985 - 18 Ton Tishken Cut-Off, Mdl CO-6-18, 16" X 11 1/2" Between Post, Tilt Base, Pneumatic, S/N 18968-185

**PNEUMATIC PRESSES**

(4) Yr 1998 - 4 Ton BTM Air Operated Toggle Presses, Mdl P-4Hx10, Stroke 10", Floor Type Base, Ram Plate, Air Tank

# COIL FEEDING EQUIPMENT/SERVO FEED LINE, OVERHEAD CRANES, STAKING PRESSES, TOOL ROOM EQUIPMENT, INSPECTION EQUIPMENT



1996



12,000# Rowe Motorized Reel with Coil Car

CWP ServoMax II Servo Feed



2002



5 Ton North American Industries Bridge Crane



20 Ton H-Frame Shop Press

5 Ton Detroit Crane & Hoist Bridge Crane



South Bend Mdl 400 Engine Lathe



8,000# Clark Fork Lift



5,000# Toyota Forklift



Triology Poli CMM



Atlas Copco Compressor



Gardner Denver 50 HP Compressor



Galbreath Baler



McClain Horizontal Compactor



Xerox Copier



1996

3 Available

Advanced Construction Ovens



GMC TopKick Box Truck



Jeep Grand Cherokee Laredo



Millermatic 250 Syncrowave Welder

## COIL FEEDING EQUIPMENT/SERVO FEED LINE

Yr 1996, Cooper Weymouth ServoMax II Servo Feed, Mdl SMX30, Capacity 30" Wide x .078"; Cabinet Base, Cascade Rolls, Max Feed Length 999.999"; Air Lift, S/N 14372

Coe 18" Servo Feed, Mdl CPRF-218, Capacity 18" Wide x .063"; Cabinet Base, Pilot Control, Air Operated Upper Feed Roll, S/N H113238

12,000# Rowe Reel, Mdl 12060-DSV, Coil Width 60"; Coil ID 19 1/2" - 24 1/2"; Coil OD 60"; Motorized - Variable Speed, Powered Hold Down Arm, Motorized Expansion, Electric Clutch & Brake, 8 Keepers, S/N16713; Coil Car Mdl BGY-12, Coil Width 60" x OD 60"; S/N 16712

Yr 1984 - 4,000# Littell Double End Reel, Mdl 40-18, Coil Width 18"; Coil ID 15" - 20"; Coil OD 60"; Electric Brakes, Full Backing Plate, Adjustable Base, S/N S-9366-84

4,000# Littell Double End Reel, Coil Width 16"; Coil ID 15" - 21"; Coil OD 60"; Warner Electric Brake, Full Backing Plate

4,000# K Vogel Reel, Type 424, Motorized, Coil Width 24"; Coil ID 16" - 21"; Coil OD 60"; S/N 04883001

26" Wide Powered 7-Roll Straightener, Coated Rolls, Air Clutch, Electric Brake, Pinch Rolls, 5 HP Drive

60" Coe Double Grip Air Feed, Capacity 60" Wide x .150" Thickness, Stroke 36" Maximum, Air Cylinders 5" Diameter Bore, 5-Roll Pull Through Straightener, Cabinet Base, Powered Entry Pinch Rolls - Pneumatic Lift

## OVERHEAD CRANES/DIE FLIPPER

Yr 2002 - 5 Ton Detroit Hoist & Crane Company Bridge Crane, Bridge Span 40'; Self Contained Rail 25' Length, Pendant Control, S/N 148908

5 Ton North American Industries Bridge Crane, Bridge Span 20'; Self Contained Rail 25' Length, Pendant Control, Shaw Box 5 Ton Hoist

Yr 1994 - Itnac Die Flipper, Mdl 6F25TSL, Capacity 5,000# Weight, S/N 94-412

## STAKING PRESSES

TA Systems, Allen Bradley TCAT Controls

Wiltech Industries Marking Machine, Mdl FTR-98, S/N 0152

## TOOL ROOM EQUIPMENT

Bridgeport Vertical Mill, Table 9" x 42"; Lyman MK7 Power Feed, Bridgeport 2-Axis DRO, 1 1/2 HP, S/N BR138254

Lincoln Vertical Mill, 9" X 42" Table, 3 HP

South Bend Engine Lathe, Mdl 400, Inch & Metric, Swing 18"; CC 40"; Steady Rest, Tail Stock, Feeds .002-.0276, Spindle Speeds 59-1400, TPI 4-56, S/N 020168

Elliott Wilson Engine Lathe, 1 1/2" Thru-hole, Swing 18"; CC 36"; Steady Rest, Tail Stock, Feeds .002-.033, Spindle Speeds 30-1200, TPI 4-56

Elliott Surface Grinder, Mdl 921 MKII, Electromagnetic Chuck 8" x 20"

Harvey Butterfly Surface Grinder, Mdl LG8-12, Electromagnetic Chuck 6" x 12"; S/N 309

Shulson Mfg Surface Grinder, Mdl IO612 Electromagnetic Chuck 6" x 12"; Acu-Rite III 2-Axis DRO

Alexander Precision Grinder, Mdl 2CG, 5,000 RPM, S/N 2069N

Ford Smith Dual Grinder, Mdl 501, 16" Dia Wheel, 5 HP, S/N 3038

Bergonzi Radial Arm Drill, Mdl FM850, Column Diameter 7"; Arm Travel 30"; Power Elevation

T-Jaw 450 Vertical Band Saw, Mdl TJ-450, Tilt Table, Welder, S/N 9145246

Parma Workamatic Vertical Band Saw, Table 18" x 29"

Keller Powered Hack Saw, 18" Blade with Part Holder, 1 1/2 HP

Rigid 300 Pipe Threader, Speed Chuck

Canadian 18" Single Spindle Drill, Table 14" x 14"; 3/4 HP

Delta 8" & 10" Bench Grinders, Skil Bench Grinder

Dayton Bench Dual Grinder, Mdl 12707W, 3/4 HP

Troyke Rotary Table, Mdl DMT-15, T-slotted Plate 12" x 12"; Lot 3518-6

(4) Vises

Arcan 20 Ton H-Frame Hydraulic Shop Press, Mdl CP-20

## INSPECTION EQUIPMENT

Triology Poli CMM Measurement System, Renishaw TP2 Probe, Granite Surface Plate 4' X 8' X 14" Thick, S/N 100-198

J&L Optical Comparator & Measuring Machine, Mdl FC-30, Screen 30" Diameter, Projection Lamp, Elevator Unit

Esterline / Collins Micro Flat Granite Surface Plate, 48" x 96" x 8" Thick, S/N 104034

Sheen Gloss Indicator, Mdl 157-50, for Bench Microgloss

3' X 5 X 8" Thick Starrett Portable Surface Plate

**TO SCHEDULE AN AUCTION OR APPRAISAL, CALL 818.508.7034**

# FORKLIFTS, COMPRESSORS, OVENS & COIL STRIP ABRASION UNITS, WELDERS, VEHICLES AND MUCH MORE!

## FORKLIFTS

8,000# Clark Fork Lift, Mdl C5-70, 8,000# Cap, 5' Long Forks, 125" Lift, Propane Powered, S/N 585-0080-6650 KOF 1187

5,000# Toyota Fork Lift, Mdl 5FGC25, 4' Long Forks, 185" Lift, Propant Powered, S/N 5FGC25-10704

4,300# Clark, Mdl GCX-25, LPG Type, Lift Height 188", Forks 48"; S/N GX230-0605

Mite-E-Lift By Lift-A-Loft Man Lift, 1,000# Cap, 110 VOLT

1,500# Big Joe Walk Behind Pallet Lift, Mdl 1056, Table 24" x 24"; Electric, S/N 55053

(2) Pallet Lifts, 5,000# Capacity

Caldwell Boom Attachment, Mdl FB-80, Capacity 8,000# at 3' - 6' Reach / 3,100# at 12' Reach, Max Reach 12' 6"; S/N 83064

Dayton Push Type Power Sweeper, Mdl 5Z042

Advance Floor Sweeper, Mdl 32B, Age 1981, S/N 849255

## COMPRESSORS

Atlas Copco Compressor, Mdl GA237-7.3, With FD 345 Air Dryer

50 HP Gardner Denver Electra Save Stationary Base Mounted Compressor, Mdl EBHOJB, 125 PSIG, S/N VO5894

150 HP Ingersoll Rand Air Compressor, Mdl SSR 150

50 HP Airscrew Air Compressor

10 HP Compressor, GE Drive

LeRoi Air Compressor

Zurn General Air Dryer, Mdl R100A, S/N R-8299

Comparts Inc Refrigerated Air Dryer, Mdl CAR860-460V, 4 HP, 200 PSI, S/N 8690

TG50 Thompson Gordon Air Dryer, Mdl 5060, S/N 86H417

Arrow Pneumatics Dryer, Mdl B-225-2

Speed Air Dryer

Yr 1996 - 200 Gallon Air Tank, Wessels Co. Mdl 400-ARW-200, 200 PSI At 450 Deg

100 Gallon Receiving Tank

Tri-Mer Air Scrubber, Water Tank 20 Gallon To Separate Acid From Air

## OVENS & COIL STRIP ABRASION UNITS

(2) Yr 1988 - Sombur Continuous Strip Abrasion Units, For Inline Extrusion Of Coil Strip

3) Yr 1996 Advanced Construction Gas Fired Ovens, 400,000 BTU, Opening 8" Wide, Ion Air Blow-Off Stations, Electrostatic Dual Head Fiber Coaters, Twin Dousing Units

## WELDERS

Lincoln AC/DC Arc Welder, Mdl AC/DC 225/125, CODE 9225-211, 480 V, 25 AMP

Branson Ultrasonic Welder, Mdl 8400, Output 900 Watt, Stroke 2 7/8", Clamp Force 440 Lbs, S/N WT90479

Branson Ultrasonic Welder, Mdl 8600, Output 1500 Watt, Stroke 2 7/8", Clamp Force 440 Lbs, S/N WU103028

Bielomatik Welding Unit

## VEHICLES

Yr 1995 - GMC Top Kick Fuel Injection Box Van, Miles 261,420, Color White, Dual Rear Wheel Manual Transmission, 20' Length Box, VIN #1GDBG6H1P1SJ525178

Yr 1997 - Jeep Grand Cherokee Laredo, Miles 150,800, Auto 4 Wheel Drive, Sunroof, 4 Door, Auto Everything, VIN #1J4G258S2VC686629

## OFFICE

Calcomp 1043 Color Plotter, Print VACS Blueprint Copier, Xerox Copy Machine, Document Shredder, 3M Overhead Projector, Conference Table, Desks, Chairs, Lockers

## MISCELLANEOUS

V Pak Parker Hydraulic Unit, Portable, with Jog & Auto Feed; (2) 25" Dual Rotary Tables; HYDRAULIC UNITS: 25 HP X 50 Gallon, 7.5 HP X 30 Gallon, 5 HP X 10 Gallon, 10 HP X 50 Gallon; Custom Part Washer with Century Pump Part 8-113420-40; Yr - 1997 Galbreath H.D.2200 Cardboard Baler, Mdl VB200HD3050, AGE 1997, S/N VB722; Yr 1999 - McClain EZ Pack Compactor, Mdl RP2292B16, 40 Yard Cap, S/N 107756; McClain Horizontal Compactor, Hydraulic, 54" X 64" Length X 30" High Entry Space, S/N 33501; Lan-Wrapper Pallet Wrapper, Mdl V-Series, 4' Rotary Table, 4' Rise; Scrap Bin, 54" Wide X 30" Deep X 5' Length; (30) Stationary Fans, (25) Work Stations, (8) Misc. Part & Tool Boxes 5' H, Steel Work Tables 46" X 94"; (3) Signode Strappers, Pallet Racking - 12' 6" Wide x 36" Deep x 13' Tall; New in Box - SEW Eurodrive Right Angle Reducer, Type K96, S.O. 850014346.97.97.001, Ratio 18:18, Torque 26,500 Lbs; Binks Spray Booth with DCE Unimaster Dust Control Unit; Graco Paint Mixer, President Air Pump, Mdl 222-772, Series I971; Unused - Binks Electrostatic Drive, Surftronic DC Drive Control, Mdl DG2 Plus; Sonic Welder Controller; Label Aire Labeller, Mdl 2114M, S/N 0157729806; (2) Riveters - RS Tubular & Stud, Style 815, Throat 10"; S/N 6407; Parmenter & Bullough, Mdl 226A6, 1/3 HP, Throat 10"; S/N 2999; Graymills Clean-O-Matic Part Washer, Mdl 300-A, 1/10 HP, S/N T-85; Binks Glue Pots; 5 Gallon Paint Tumbler; (1000) Plastic Part Containers; 8,000 Gallon Open Top Holding Tank; Air Tools, Impact Wrench, Socket Sets, Coilets, Drills, Letter & Number Punches, (33) Pedestal Fans; (10) Vidmar Cabinets

## REAL ESTATE TO BE AUCTIONED AT 1:00 PM PORT HURON, MI BLDG

- ▼ 105,000 SQ FT PRE-ENGINEERED BLDG
- ▼ 4000 FT OF OFFICE SPACE
- ▼ 2 LOADING DOCKS
- ▼ 4 ROLLUP DOORS
- ▼ 20 FT CLEARANCE
- ▼ NEW IN 2002 - METRON ELECTRIC FIRE PUMP SYST., Mdl M300-75-480C, S/N QE-02N14175-11
- ▼ HEAVY POWER
- ▼ AIR LINES THROUGHOUT BLDG



ADDRESS:  
2401 20th Street, Port Huron, MI 48060

\*BID SUBJECT TO OWNERS APPROVAL

## FOR PRIVATE SALE!

**(2) 110 TON NIIGATA INJECTION MOLDERS**  
Location: Middlesex, NJ

## (2) 110 TON 1999 NIIGATA INJECTION MOLDERS



Mdl. #NE110UA4, S/N 10117F, New 1999

Capacity = 110 Ton  
Platen Size = 24.02" X 24.02"  
Distance Btwn Tie Bars = 16.14" x 16.14"

Equipped w/: Mitsubishi Control;  
Core Pull; Air Eject; 35mm Screw & Barrel; Robot; Interface ; 480 Volts

Condition: Excellent  
Availability: Immediate

**FOR MORE INFO, CALL 818.508.7034, EXT 14**

# BIDITUP AUCTIONS & APPRAISALS WORLDWIDE

WWW.BIDITUP.COM

# BIDITUP AUCTIONS & APPRAISALS WORLDWIDE

WWW.BIDITUP.COM

## FEATURED AUCTION

Assets No Longer Required By  
**DUALEX, INC.**

A DIVISION OF DEPCO INTERNATIONAL

An Integral Source For Extruded Products And Plastic  
Injection Molded Parts

Wednesday, August 17, 2005

Port Huron, MI USA



AUCTIONS & APPRAISALS WORLDWIDE

11426 Ventura Blvd

Second Floor

Studio City, CA 91604

Phone - 818.508.7034

Fax - 818.508.3025

info@biditup.com

## UPCOMING AUCTIONS

8/9	MFG OF HAND AND POWER TOOLS, DIAGNOSTICS, & SHOP EQUIP. • Mt Carmel, IL
8/17 to 8/19	CNC WOODWORKING FACILITY • Hope, AR <i>On-Line Auction!</i>
8/18	A COIL PROCESSING SERVICE CENTER • WARREN, MI
8/23	MFG OF SOLID CARBIDE CUTTING TOOLS; CNC TOOL CUTTER & GRINDER FACILITY • Escondido, CA
8/30	MFG OF PRINTED CIRCUIT BOARDS • Tempe, AZ
9/14	CNC AMADA FABRICATION FACILITY • Albuquerque, NM
9/30	40k SQ. FT. REMOVABLE SPRUNT STRUCTURES BLDG • China
9/30	Approximately 1800 Tons of Partially Fabricated No.1 and No.2 Steel Beam, Plate, Angle and Tubing • Hillsboro, OR
9/30	Printed Circuit Board Mfg Equip. Including Hitachi Drilling Machines, Moving Probe Tester and Etching Equip. • CA
9/30	Zinc Smelting, Casting and Water Purification Facility Including Bldg Structures, Office and Laboratory Facilities • West Coast, USA



## LIVE ON-SITE AUCTION

Assets No Longer Required By  
**DUALEX, INC.**  
A DIVISION OF DEPCO INTERNATIONAL

### AUCTION

Wednesday, August 17, 2005  
Beginning at 10:30 AM EDT

### PREVIEW

Tuesday, August 16, 2005  
9:00 AM to 4:00 PM EDT

### LOCATION

2401 20th Street  
Port Huron, MI 48060 USA

## TERMS & CONDITIONS

Sale Conducted by: BIDITUP, Subject to our customary terms of sale, (Available at the auction site on the day of the sale), and any and all amendments and modifications announced by the auctioneer at the time of the auction. The auctioneer and seller make no warranties or guarantees, expressed or implied, as to the defects in or the correctness or accuracy of the descriptions in any advertising of any item(s) being auctioned and will not be responsible for any advertising discrepancies or inaccuracies of any kind. All items sold will be on an "AS IS," "WHERE IS," and "WITH ALL FAULTS" basis "WITHOUT EXCEPTION" and "WITH REMOVAL AT BUYER'S RISK AND EXPENSE". AUCTIONEER AND SELLER MAKE NO WARRANTIES OR GUARANTEES OF ANY KIND, EXPRESSED OR IMPLIED AS TO THE NATURE, QUALITY, VALUE OR CONDITION OF THE ITEM(S) BEING AUCTIONED OR ITS (THEIR) SUITABILITY FOR ANY USE. AUCTIONEER AND SELLER EXPRESSLY AND SPECIFICALLY DISCLAIM WITHOUT LIMITATION ANY WARRANTY OF MERCHANTABILITY OR FITNESS FOR A PARTICULAR PURPOSE. AUCTIONEER SHALL NOT BE LIABLE FOR SPECIAL, CONSEQUENTIAL OR INCIDENTAL DAMAGES. It shall be the buyer's obligation to verify information and descriptions of property prior to sale. BIDITUP, and its advertising agency assume no liability for errors or omissions in this brochure. The auctioneer does not warrant the age, accuracy, genuineness, authenticity, description, weight, count or measure of any listings specified herein. Although it is not likely, auction sales are subject to cancellation or postponement, and sometimes items are withdrawn from the sale, kindly contact BIDITUP, prior to travel as there will be no reimbursements. On the day of the sale, all successful bidders must immediately pay the full purchase price in cash, certified funds, cashiers check, wire transfer or company check with a letter from the buyer's bank guaranteeing unqualified payments to BIDITUP. This letter is valid until 30 working days after the auction sale. Company checks without letter from bank guaranteeing unqualified payment will not be accepted. The failure to make payment promptly shall be considered default and each lot or lots so purchased will be placed for resale. The buyer must pay the total invoice price for all the lots purchased before any removal can begin. All buyers must pay applicable sales tax (unless evidence of exemption is provided to auctioneer's satisfaction). Buyers are responsible for the transportation, associated costs and risks involved in the removal of purchased item(s). Certain items may contain residual chemicals and/or hazardous materials. The purchaser(s) hereby indemnify and hold harmless the auctioneer and seller from any and all damages, claims or liability from any injuries to persons or property of any type whatsoever caused during the sale of, during the removal, or during use or operation of the purchased item(s). If you are unable to attend, please contact us regarding placing a proxy bid. PLEASE NOTE: ALL SALES ARE SUBJECT TO A BUYER'S PREMIUM.

## LODGING

**Days Inn**  
(Approx. 2 Miles From Site)  
70 Gratiot Blvd  
Marysville, MI  
810.364.8400

**Best Value Inn**  
(Approx. 2.5 Miles From Site)  
514 Huron Ave  
Port Huron, MI  
301.694.6600

**Hampton Inn**  
(Approx. 3.2 Miles From Site)  
500 Thomas Edison Pkwy  
Port Huron, MI  
810.984.8000

## DIRECTIONS

**From: Detroit, MI - Detroit Metropolitan Wayne County Airport (DTW)**  
(Approx. 75 Miles From Auction Site)

Start going toward the AIRPORT EXIT on WILLIAM G ROGELL DR. WILLIAM G ROGELL DR becomes MERRIMAN RD. Bear Right onto I-94 EAST toward DETROIT. Take exit #269/RANGE RD onto DOVE RD toward DOVE ST. DOVE RD becomes DOVE ST. Turn Left on 20TH ST. Arrive at 2401 20TH ST, PORT HURON, on the Left. Watch for auction signs.

**From: Grand Rapids, MI - Kent County International Airport (GRR)** (Approx. 177 miles from Auction Site)

Take I-96 EAST toward LANSING. Take exit #89 onto I-69 NORTH toward CLARE/FLINT. Take the DOWNTOWN/PORT HURON Left exit onto I-69-BL SOUTH. Turn Right on 24TH ST. Turn Left on BEARD ST. Turn Right on 20TH ST. Arrive at 2401 20TH ST, PORT HURON, on the Right. Watch for auction signs.