

BIDITUP Live On-Site

AUCTION



Assets No Longer Required in the Continuing Operations ????

WESTLECTRIC CASTINGS, INC.

CARBON, LOW ALLOY & STAINLESS STEEL CASTINGS FACILITY

Tuesday, October 26th, 2004
Beginning at 10:30 am, PDT
2040 Camfield Avenue
Los Angeles, CA 90040

By Order of Owner

H&A FOUNDRY

PERMANENT MOLD & INVESTMENT CASTING FACILITY

Thursday, October 28th, 2004
Beginning at 10:30 am, PDT
13400 Hanford Armona Road
Hanford, CA 93230

- Melting Equipment
- Core Equipment
- Sand Systems
- No Bake Systems
- Cleaning Room
- Heat Treat & Ovens
- Dust Collectors
- Cranes & Hoists
- Air Compressors
- Lab
- Forklifts
- Rolling Stock
- Welders
- Office
- Pouring Equipment
- Foundry
- Machine Shop & Much More!

visit **BIDITUP WORLDWIDE** on the web at : www.biditup.com





1990 INDUCTOTHERM VIP POWERTRACK



AJAX "PACER" UPGRADED 2001



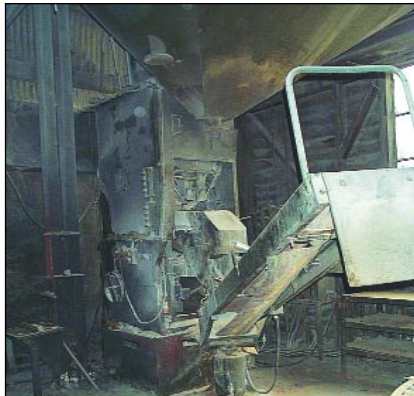
SIMPSON, MDL. 2G SAND MULLER



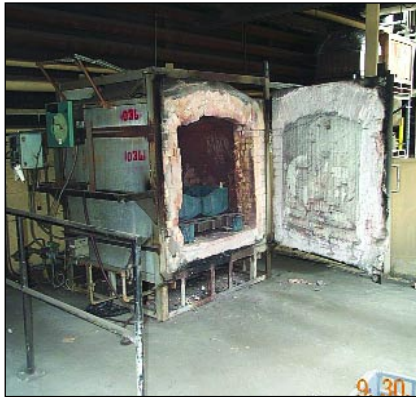
G STATION OVERHEAD SAND SYSTEM



SIMPSON MDL. 20D S AND MULLER



OMCO SUPER BOWL MIXER MDL. MS11



GM ENTERPRISES CAR BOTTOM FURNACE



DEPENDABLE SHELL CORE MACHINE

MELTING EQUIPMENT

1. **1990 INDUCTOTHERM VIP POWERTRACK, MDL. 750-10**, 750 KW Power Supply, 1000 Cycle, 3,000 Lb. Hydraulic Tilt Furnace, LIEBERT Closed Loop Cooling System, S/N 89A36763-1.
1. **AJAX "PACER" UPGRADED 2001**, To Solid State Controls, 250 KW, 1000 Cycle, Variable Frequency, Closed Intend/Water System.
1. **1,000 LB. HYDRAULIC TILT FURNACE.**
1. **2000 500 LB. LIFT TILT FURNACE.**
1. **1,500 KVA ARC FURNACE, LENS & FURNACE ONLY, NO TRANSFORMER.**

SAND SYSTEMS

1. **SIMPSON, MDL. 2G SAND MULLER**, w/ Harley Moisture Controller, Mdl 18A, Dust Hood Batch Hopper, S/N E7509011.
1. **G STATION OVERHEAD SAND SYSTEM**, 24"x45'L Belt Conveyor, Simplicity 4'x10' Double Deck Screen, S/N 2410-7595-2859, Aerator, 160-Ton Sand Storage Silo, Booth Sand Transporter, Bucket Elevators, Hewitt Robbins 5'x8' Heavy Duty Shake Out.
1. **SIMPSON MDL. 20D S AND MULLER**, w/Dust Hood, Batch Hopper, Bucket Elevator 50' H 10" Belt, 6"x 8" Buckets, 20"x42" Casing Storage Bin, Spencer Mdl. 4000 H Turbo Blower, 100 HP.

NO BAKE SYSTEMS

1. **2000 PALMER CONTINUING MIXER, MDL. M300XL**, 300 Lb./ Minute Articulated Arm, 2 Pumps, 2 Station Overhead Feed Hoppers w/Air Gates, S/N M344.
1. **OMCO SUPER BOWL MIXER MDL. MS11**, 3 Pumps, Air Operated Discharge, Flask Filler 20" W x 10' L, Power Belt, 360 Swivel Roller Conveyor 24" Wide x 3" Centers, 2-1/2" Die Rolls, Osborn Jolt Pin Lift. 32"x 36" Table.
1. **STRONG SCOTT 500 LB./ MIN. CONTINUOUS MIXER.**
1. **DEPENDABLE SAND RECLAIMER, MDL. 183-1-3THP-SCP**, 3-Ton/Hr., W/Elevator, Classifier, S/N 103.

CORE EQUIPMENT

1. **DEPENDABLE SHELL CORE MACHINE, MDL. 200 SA**, Semi Automatic, Gas Fired, S/N 292.
1. **BEARDSLEY & PIPER MULBARO**, w/2 Barrows.

CLEANING ROOM

1. **AMERICAN WHEELBRATOR 34 SUPER TUMBLAST**, w/Bucket Loader And Discharge Conveyor, Cart Pusher, S/N A132156.
1. **AMERICAN WHEELBRATOR**, 6' Dia. Swingtable, Power Table, S/N A123229.
1. **FOX SINGLE END SNAG GRINDER**, High Speed 12,500 RPM, 24" Wheel, 25HP.

HEAT TREAT & OVENS

2. **GM ENTERPRISES CAR BOTTOM FURNACE**, 2 Zone, 4'x 4'x 4', Gas Fired, 2000°F, Eclipse Burners, Protectol Controls.
1. **GM ENTERPRISES BOX FURNACE**, 2 Zone, 6'W x 10"D x 6'H, Gas Fired, 2000°F, Eclipse Burners, Protectol Controls, Fiber Blanket Insulation.
1. **LIFT BOX HEAT TREAT**, 18"x24"x36", 2000°F, Gas Fired, Protectol Controls.
2. **DESPATCH CORE OVEN DOUBLE DOOR**, 6'D x 6'H x 8'W, Gas Fired, Recirculating, w/ Haskell # 1 Afterburner 2' 3" Dia. x 14' 7"H, 800,000 BTU/HR, w/Honeywell Chart Recorder.
1. **GRIEVES MUFFLE FURNACE**, 2000 Degrees, 12"x12"x12".
5. **PHOENIX DRY ROD OVEN**, Type 400.
1. **PHOENIX DRY ROD OVEN**, Type 500.

DUST COLLECTORS

1. **REES, MDL. 3-2400 AE**, 3 Compartment 480 Bags, 6" Dia. x 9'9"H, 7200 Sq.Ft. Cloth, 40HP Blower.
1. **WHEELBRATOR, MDL. 112 D**, Size 20, 75 HP Blower.
1. **WHEELBRATOR, MDL. 70 KD**, 40 HP Blower.
1. **NATIONAL WET TYPE**, w/Scrubber, Hydro Filter # 1, Size 450-5, 60HP.



MERICAN WHEELABRATOR 34 SUPER TUMBLAST



6' SWINGTABLE AMERICAN WHEELABRATOR



FOX SINGLE END SNAG GRINDER



MAGNAFLUX PARTICLE INSPECTION UNIT



DESPATCH CORE OVEN DOUBLE DOOR



PHOENIX DRY ROD OVEN



5000 PSI STRAIGHTENING PRESS



WARNER & SWASEY #3A TURRET LATHE

CRANES & HOISTS

1. SHEPHARD NILES 10-TON BRIDGE, 35' Span 200'runway, Double Girder, Top Running, Cab Operated.
1. SHEPHARD NILES 7-1/2-TON BRIDGE, 35" Span Runway, Double Grinder, Top Running, Car Operated, S/N A5130.
2. P&H BRIDGE CRANE, Outdoor, Free Standing, 30 Span, Underslung, 200' Runway Pendant Control, 5-Ton Yale Hoists.
1. ABELL-HOWELL JIB CRANE, 5-Ton Capacity.
1. 5-TON CHECO BRIDGE TOP RUNNING, 50' Span, 6 Way Pendant Control.
2. YALE, 3-TON BRIDGE CRANE UNDERSLUNG, 6 Way Pendant Control, 20' Span.
1. CM, 3-TON JIB CRANE, w/Hoist.
1. CM, 2-TON JIB CRANE, w/Hoist.
1. CONCO 1-TON JIB CRANE, W/16' Articulated Arm, 1-Ton, Air Hoist.
1. LARGE ASSORTMENT 1/2, 1, 2, 3-TON AIR & ELECTRIC HOISTS, Budget, Coffing, Yale, P&H.

AIR COMPRESSORS

2. INGERSOL RAND MDL. XLL-228-3042, 150HP, Size 16-1/4 x 10 x 5, 2 Stage, 2 Cylinder, 100 PSI.
2. INGERSOL RAND TYPE 40T, DUAL UNITS, w/200 HP Motor Powering Both Units, S/N 40T60089.
1. INGERSOL RAND TYPE 40, Water Cooler, 75HP w/Receiver, S/N 40T60089.

SHOP EQUIPMENT

1. PONAR & WAFUM ENGINE LATHE MDL. TUR 630M, 24"x 110", 18-400 RPM Steady Rest, Tool Holder, 12"- Jaw Chuck.
1. WARNER & SWASEY #3A TURRET LATHE.
1. KIRLOOKAR LATHE, 16x48.
1. ROCKWELL DRILL PRESS, Floor Type 3/4 HP, S/N 117-5490.
1. 5000 PSI STRAIGHTENING PRESS, 48" Between Columns.
1. MAGNAFLUX PARTICLE INSPECTION UNIT, Type Cru-8 10,000 Amp, S/N 821128.
1. BMM HIVAC MDL. HD, Electric, 40HP, S/N 77-317.

LAB

1. 1998 THERMO JARRELL ASH SPECTROMETER, Atom Comp 8/ECWS, Vacuum Type, w/Dot Matrix Printer.
1. DIETECT SAND RAMMER.
1. DIETECT SAND PERMMEATER.
1. DIETECT SAND STRENGTH MACHINE, MDL. 401.

FORKLIFTS

1. HYSTER, 8000 Lb., Propane, Double Mast, Solid Tires.
1. HYSTER, 6000 Lb., Propane, Double Mast, Solid Tires.
1. TOYOTA, MDL. 02-2FGC30, 6000 Lb., Propane, Double Mast, Solid Tires.
1. CLARK, 6000 Lb., Propane, Double Mast, Solid Tires.
1. CLARK, MDL. DPS 301, 4,675 Lb., Propane, Double Mast, Solid Tires, S/N GP1381-0005-6497FA.

ROLLING STOCK

1. 2002 MELROE BOBCAT MDL. 863, F Series, S/N 514428874.
1. 1980 INTERNATIONAL, 40' Flat Bed.
1. 1986 FORD F 700 DIESEL, 20' Bed, Double Wheel.
1. 1980 INTERNATIONAL DUMP TRUCK, MDL. COF 4000D, S/N 359472G276626.
1. TENANT FLOOR SWEEPER, MDL. 265, Propane.

WELDERS

4. MILLER, MDL. SRS 1500 A1, S/N's HK284128, HH000753, HE72618104, HH665381.
3. MILLER, MDL. SRS-1000-AI, S/N's JB14273, HG011891, JE819027.
2. MILLER, GOLD STAR MDL. 500 SS, S/N'S JK711270, JK 718069.
2. MILLER, MDL. SRH 333, S/N'S HJ107021, HK295865.



5-TON CHECO BRIDGE TOP RUNNING



LINCOLN IDEALARC ARC WELDER



CLARK FORKLIFT, MDL. DPS 301



2002 MELROE BOBCAT MDL. 863

WELDERS (CONTINUED)

1. MILLER, MDL. 320A/BP, S/N HF836913.
2. 12' DIA. WELDING TABLES.
1. LINCOLN IDEALARC ARC WELDER.

OFFICES

ASSORTED OFFICE FURNITURE & EQUIPMENT INCLUDING: DESKS, CREDENZAS, CHAIRS, FILE CABINETS, PRINTERS, COPIER-FAX MACHINES, TABLES, STORAGE CABINETS & MORE!

MISCELLANEOUS

2. RYOBI DISC/BELT COMBO, 4" Disc, 36" Belt.
1. HARDY PLATFORM SCALE 2000 LB. DIAL, 4500 Beam.
1. TOLEDO PLATFORM SCALE 1500 LB. CAP.
25. ASSTD. ALUMINUM SNAP FLASKS.
200. ASSTD. STEEL FLASKS, 20x30 to 48 Square.
1. LOT ASSORTED LADLES.
2. MODERN FA POURING DEVICES.
1. STANLEY/VEMCO ELECTRIC GATE, MDL. ASJH.
1. 36" SHRADER LIFTING MAGNET.

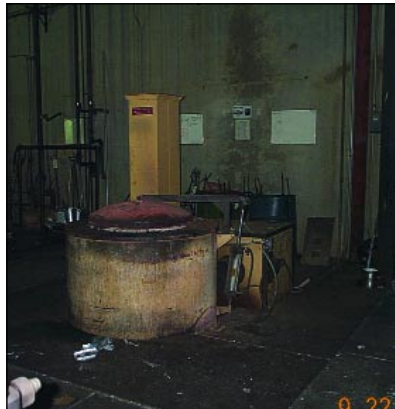
BENCH VISES, CARTS, DOLLIES, SHELVING, CABINETS, DAYTON FLOOR FANS, CEILING FANS, LADDERS, CORE RACKS, WELDING TABLES, HAND TOOLS, LOCKERS, WORK BENCHES, HAND TRUCKS, PALLET JACKS, REELS, REFRACTORY LINING GUNS, TOTE BOXES, DUMP HOPPER, ELECTRICAL SUPPLIES, WELDING SUPPLIES & MORE.

H&A FOUNDRY

Thursday, October 28th, 2004 • 10:30 am, PDT • 13400 Hanford Amona Rd., Hanford , CA



1995 THERMTRONIX MELT FURNACE, MDL. SF1500



1997 THERMTRONIX MELT FURNACE, MDL. GS-1000



36X36 STAHL AUTOCAST TILT POUR MACHINE



24X30 STAHL AUTOCAST TILT POUR MACHINE

MELTING EQUIPMENT

2. 1995 THERMTRONIX MELT FURNACE, MDL. SF1500, 1500lbs/hr, w/Controls, S/N 951480-B, 951291-R.
3. 1997 THERMTRONIX MELT FURNACE, MDL. GS-1000, 1000lbs/hr, w/Controls, S/N 971389, 971403, 971384.
1. ALL INDUSTRIAL MELT FURNACE, MDL. MNP, Gas Fired, Motorized Tilt 1000lb Cap.
2. STATIONARY MELT FURNACE, Gas Fired, 350 lb. Cap. w/Blower.
1. STATIONARY MELT FURNACE, Gas Fired, 300 lb. Cap. w/Blower.
1. FOSECO DEGASSER, Portable, S/N 21.

POURING EQUIPMENT

1. STAHL AUTOCAST TILT POUR MACHINE, Size 36x36 w/Unitrol Control, S/N 6528136.
2. STAHL AUTOCAST TILT POUR MACHINE, Size 24x30 w/Unitrol Control.
8. STAHL AUTOCAST TILT POUR MACHINE, Size 18x24 w/Unitrol Control.

HEAT TREAT DEPARTMENT

2. RECCO DROP BOTTOM FURNACE, Electric Size 6'x10', w/Quench Tank, Auto Controls, Basket.
1. DESPATCH CORE OVEN, Gas Fired, Size 6'x 6'x 6', 500 Degree F.

FOUNDRY

2. SHALCO SHELL CORE MACHINES, MDL. U180, Gas Fired, Feed Hopper, S/N 7020, 7079.
2. BEARDSLEY PIPER SHELL CORE MACHINES, MDL. SF6CA, Gas Fired, Feed Hopper S/N CSC6'6006805, CSC6'3486805.
1. 3 STATION OVERHEAD SAND SYSTEM, w/Hoppers, Screen Elevator.
3. SPO JOLT SQUEEZE MOLDING MACHINES.
1. PALMER CONTINUOUS MIXER, 75 lbs/min.
2. HENSCHAL CORE KNOCKOUT.
1. ASSTD. ALUMINUM SNAP FLASKS.
1. MAX 30" DISC SANDER.

TO SCHEDULE AN APPRAISAL, CALL 818.508.7034



DESPATCH CORE OVEN



SHALCO SHELL CORE MACHINES, MDL. U180



AMERICAN WHEELABRATOR TUMBLAST



CLEMCO SAND BLAST CABINET, MDL. SCN40-50



1999 SPECTRO SPECTROMETER, MDL. LAB-JR-CCD



1958 RANCHERO DRAGSTER



1979 CHAPARRAL RACE TRAILER, 40', GOOSENECK



24' CHALLENGER FISHING/DIVING BOAT, 350 CHEVY



DO-ALL VERTICAL BANDSAW



1997 BROWN & SHARP



ACRA MILL, MDL. AM-2V

CLEANING EQUIPMENT

1. AMERICAN WHEELABRATOR TUMBLAST, Size 20x27, Rubber Belt, S/N A23456.
1. CLEMCO SAND BLAST CABINET, MDL. SCN40-50, w/Dust Collector, 900cfm, S/N 50804.
1. MERCURY DOUBLE END GRINDER, w/Backstand.
1. SQUARE DEAL DOUBLE END GRINDER, w/Backstand.
1. SINGLE END BELT GRINDER, w/Backstand.
1. DO-ALL VERTICAL BANDSAW, 36" Cap., Mdl. 36-46, 10HP.
1. NORTHFIELD VERTICAL BANDSAW, 36" Cap., 30x36 Table, 7.5HP., 20, Blade, S/N 733154H.
1. TANNEWITZ VERTICAL BANDSAW, 36" Cap., S/N 31-557546.

LAB EQUIPMENT

1. 1999 SPECTRO SPECTROMETER, MDL. LAB-JR-CCD, Type LJ802, Item # 11400/99, w/Epson Mdl. LX300 Printer.
1. PHASE II ROCKWELL HARDNESS TESTER, Bench Type, #900-330.
1. TINNIUS OLSON HARDNESS TESTER, 60,000lb Cap.

INSPECTION EQUIPMENT

1. 1997 BROWN & SHARP CO-ORDINATE MEASURING MACHINE, MDL. REELEX 7105, 33x53 table, Touch Screen Control, S/N 0797-3328.
1. ZYGLO DIE PENETRANT LINE, MDL. Z8-2972-A, MDL. ZD-2972-A, S/N55337.
1. 1998 ICB X RAY UNIT, MDL. 97-635-03, S/N 011.

MACHINE SHOP

1. ACRA MILL, MDL. AM-2V, Power Travel, 9x42 Table, 3 HP., 60-4200 RPM W/DRO, S/N 010223.
1. 26" BULLARD CUTMASTER.
1. CENTRAL 10" TABLE SAW.
1. CENTRAL 1HP. DRILL PRESS.
1. BUFFALO DRILL PRESS, MDL. 22.
3. BENCH GRINDERS, 1/2 HP.

WELDING EQUIPMENT

1. MILLER SYNCHROWAVE AC/DC WELDER, 250 Amp, Portable.
1. LINCOLN WELDER, AC/DC 225/175.

SHOP EQUIPMENT

1. GARDNER DENVER AIR COMPRESSOR, w/2 Air Dryers, Electra Screw, 100HP, S/N 207ESC366.
1. SPEEDAIRE AIR COMPRESSOR, 5HP., w/Receiver.
2. MITSUBISHI FORKLIFT, 6000lb Cap. Propane, Solid Tires, Triple Mast, S/N AF83A-60165,
1. 800-TON ALUMINUM DIE CAST MACHINE.
1. ASST TOOLING, PRECISION EQUIPMENT, RACKING, MISC.

LEISURE & SPORTING VEHICLES

1. 1958 RANCHERO DRAGSTER, FORD 490 BORED TO A 514 ALCOHOL FUELED MOTOR, w/Teflon 671 Blower, Fuel Injected, Parachute, Certified Cage, 4-Link 10" Rear Slicks, 4" Fronts, 8 Second Machine. Fastest Door Slammer at Super-Ford, True Hot Rod, All Metal.
1. 1979 CHAPARRAL RACE TRAILER, 40', GOOSENECK, 110V Fluorescent Lighting, Winch, Generator.
1. 24' CHALLENGER FISHING/DIVING BOAT, 350 CHEVY, w/Volvo Out Drive, Recent \$12,000 Out Drive Rebuild.
1. 1979 FOUR TRAVEL MOTOR HOME, Teak Wood Interior, 440 Dodge, Generators, All Appliances, Stereo, Water Heater, Air Conditioning, Roof Recently Re-Sealed, Recent All Systems Check.
1. AVENGER CHASSIS, Front Rack Vented Disk Brakes, Set Up for a 72 Cougar or a Fast Back Mustang.
1. FUNNY CAR CHASSIS & BODY, NEW, CERTIFIED, POWDER COATED.
1. COMPLETE DRAGSTER FRAME.

WESTLECTRIC CASTINGS, INC.

AUCTION

Tuesday, October 26th, 2004
Beginning at 10:30am, PDT

PREVIEW

Monday, October 25th
9am to 4pm & Morning of Sale

LOCATION

2040 Camfield Ave.
Los Angeles, CA 90040

PROXY BID

Attend the auction in person. Submit a proxy bid and we will bid for you. Please contact us at 818.508.7034 for more information. All sales are subject to buyer's premium.

H&A FOUNDRY

AUCTION

Thursday, October 28th, 2004
Beginning at 10:30am, PDT

PREVIEW

Wednesday, October 27th
9am to 4pm & Morning of Sale

LOCATION

13400 Hanford Armona Rd.
Hanford, CA 93230

DIRECTIONS

TERMS & CONDITIONS

Sale Conducted by: biditup!, Subject to our customary terms of sale, (Available at the auction site on the day of the sale), and any and all amendments and modifications announced by the auctioneer at the time of the auction. The auctioneer and seller make no warranties or guarantees, expressed or implied, as to the defects in or the correctness or accuracy of the descriptions in any advertising of any item(s) being auctioned and will not be responsible for any advertising discrepancies or inaccuracies of any kind. All items sold will be on an "AS IS", "WHERE IS", and "WITH ALL FAULTS", basis "WITHOUT EXCEPTION" and "WITH REMOVAL AT BUYER'S RISK AND EXPENSE". AUCTIONEER AND SELLER MAKE NO WARRANTIES OR GUARANTEES OF ANY KIND, EXPRESSED OR IMPLIED AS TO THE NATURE, QUALITY, VALUE OR CONDITION OF THE ITEM(S) BEING AUCTIONED OR ITS (THEIR) SUITABILITY FOR ANY USE. AUCTIONEER AND SELLER EXPRESSLY AND SPECIFICALLY DISCLAIM WITHOUT LIMITATION ANY WARRANTY OF MERCHANTABILITY OR FITNESS FOR A PARTICULAR PURPOSE. AUCTIONEER SHALL NOT BE LIABLE FOR SPECIAL, CONSEQUENTIAL OR INCIDENTAL DAMAGES. It shall be the buyer's obligation to verify information and descriptions of property prior to sale. biditup!, and its advertising agency assume no liability for errors or omissions in this brochure. The auctioneer does not warrant the age, accuracy, genuineness, authenticity, description, weight, count or measure of any listings specified herein. Although it is not likely, auction sales are subject to cancellation or postponement, and sometimes items are withdrawn from the sale, kindly contact biditup!, prior to travel as there will be no reimbursements. On the day of the sale, all successful bidders must immediately pay the full purchase price in cash, certified funds, cashiers check, wire transfer or company check with a letter from the buyer's bank guaranteeing unqualified payments to biditup! This letter is valid until 30 working days after the auction sale. Company checks without letter from bank guaranteeing unqualified payment will not be accepted. The failure to make payment promptly shall be considered default and each lot or lots so purchased will be placed for resale. The buyer must pay the total invoice price for all the lots purchased before any removal can begin. All buyers must pay applicable sales tax (unless evidence of exemption is provided to auctioneer's satisfaction). Buyers are responsible for the transportation, associated costs and risks involved in the removal of purchased item(s). Certain items may contain residual chemicals and/or hazardous materials. The purchaser(s) hereby indemnify and hold harmless the auctioneer and seller from any and all damages, claims or liability from any injuries to persons or property of any type whatsoever caused during the sale of, during the removal, or during use or operation of the purchased item(s). If you are unable to attend, please contact us regarding placing a proxy bid. PLEASE NOTE: ALL SALES ARE SUBJECT TO A BUYER'S PREMIUM.

COPY TO COME

LODGING

COPY TO COME

UPCOMING AUCTIONS • Visit WWW.BIDITUP.COM

Assets No Longer Required in the Continuing Operations
Adobeair, Inc.
World Renowned Manufacturing of Air & Evaporative Coolers
Tuesday, October 19, 2004 • Phoenix, AZ

Assets No Longer Required in the Continuing Operations
DV Chukar
State of the Art Fabricating Facility
Wednesday, October 20, 2004 • Phoenix, AZ

Formerly the Assets of
Major Optical Telecommunications Manufacturing Company. Multi Million Dollar Bidcast Auction Featuring High End Late Model Test & Measurement Equip.
Thursday, October 21, 2004
Fremont, CA

By Order of Ontario Superior Court of Justice Case #04-CL-5282:
In the matter of 3003385 Novia Scotia Co.
Complete Wide Bed & High Tonnage Stamping Facility
Tuesday, November 9, 2004
Windsor, ON, Canada



11426 Ventura Blvd
Second Floor
Studio City, CA 91604
Phone - 818.508.7034
Fax - 818.508.3025
info@biditup.com
Steven Mattes, Auctioneer
CA Bond #CSC3062775

FIRST CLASS PRE-SORT
MAIL U.S. POSTAGE
PAID
PERMIT NO. 32365
LOS ANGELES, CA