

# AUCTION

**Tuesday, May 22, 2007 Beginning at 9:00 A.M. CDT  
Starts at Location 1 and Ends at Location 2**

**WEBCAST**  
Can't attend the auction in person?  
Bid live on [WWW.BIDITUP.COM](http://WWW.BIDITUP.COM)

**LOCATION 1**

**Citation Aluminum Machining  
2440 S. US Hwy. 31, Bay Minette, AL 36507**

**LOCATION 2**

**Citation Aluminum Casting  
43575 Nicholsville Rd., Bay Minette, AL 36507**



**— CITATION CORPORATION —**  
*State-of-the-Art Aluminum Automotive  
Foundry & Late Model CNC Machining Facility*



**1995**  
Hunter Mdl. HMP32E Automatic Molding System  
(D Foundry)



**1996**  
Hunter Mdl. HMP20E Automatic Molding Machine  
(South Foundry)



**1994**  
Hunter Mdl. HMP20D Automatic Molding System  
(North Foundry)



**1993**  
Toyoda 4-Axis Machining Center

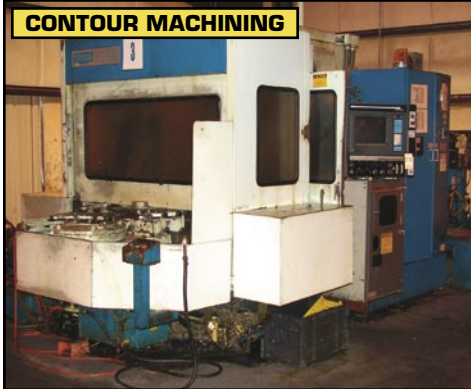
- ▶ SAND SYSTEM
- ▶ MOLDING-AUTOMATIC
- ▶ MELTING
- ▶ CORE DEPARTMENT
- ▶ CORE ROOM
- ▶ PERMANENT MOLDING
- ▶ HEAT TREAT
- ▶ DIE CASTING BUILDING
- ▶ SPARE PARTS ROOM
- ▶ CORE KNOCKOUT & PROCESSING
- ▶ RECLAMATION
- ▶ ROLLING STOCK
- ▶ MISCELLANEOUS
- ▶ CNC MACHINING
- ▶ TOOLING & SUPPORT
- ▶ ROTARY DIAL INDEX MACHINES
- ▶ O.E. ASSEMBLY & TEST STATIONS
- ▶ INSPECTION & QUALITY CONTROL
- ▶ CHIP & COOLANT RECYCLING
- ▶ AUTOMATIC PART WASHING SYSTEMS
- ▶ AIR COMPRESSORS & DRYERS
- ▶ PLANT SUPPORT EQUIPMENT



Toyoda 4-Axis Machining Center



Toyoda 4-Axis Machining Center



Toyoda 4-Axis Machining Center



HAAS VF-2

**CNC MACHINING**

**1993 Toyoda Dual Pallet 4-Axis Horizontal Machining Center**, MDL. FA550, S/N 7377, X-29", Y-31.5", Z-33.4", Fanuc 15-M Controls, Rigid Tapping, Thru-Spindle Coolant, 64 Sta. A.T.C., Cat 50 Tooling, 1 Degree Increment Table

**1995 Toyoda Dual Pallet 4-Axis Horizontal Machining Center**, MDL. FH555, S/N 7658, X-29", Y-31.5", Z-33.4", Fanuc 15-M Controls, Rigid Tapping, Thru-Spindle Coolant, 64 Sta. A.T.C., Cat 50 Tooling, 1 Degree Increment Table

**1989 Toyoda Dual Pallet 4-Axis Horizontal Machining Center**, MDL. FH55, S/N NM6770, X-28", Y-28", Z-22", Fanuc 10-M Controls, 96 Sta. A.T.C., Cat 50 Tooling, Contour Indexing

**1999 Haas Vertical Machining Center**, MDL. VF-2, S/N 18008, X-30", Y-16", 14" x 36" Table, CAT 40 Taper, 7500 RPM, 20 HP Spindle, 20 STA. A.T.C., 710 I.P.M., Haas Controller

**TOOLING & SUPPORT**

**RSF Elektronik Tool Inspection Station**, MDL. PG1000

**Huge Selection of Cat 50 Tool Holders & Tooling**

(12) Toyoda Tooling Pallets

(22) Tooling Tombstones

**Harig/Bridgeport Surface Grinder**, MDL. 618

**Bridgeport Vertical Mill**, S/N 128214, 9 x 50, V.S.

**SpeedFam Lapping 3 Ring Lapping Machine**, MDL. Spitfire, S/N GYR36-3C00466037-1021

**ROTARY DIAL INDEX MACHINES**

(13) **Key Products Rotary Dial Machines**, S/N's 98270, 98380, 98370, 99260, 99170, 11224, K10841, 10866, 11081, K11065, 98260, K11304, K11260

**Key Products 2 Head Slide Machines**, S/N's K-97220, 202260

**Precision Industrial Automation Rotary Dial Machines**

**O.E. ASSEMBLY & TEST STATIONS**

**Stauble Machine & Tool Conveyor Type Automatic Assembly Machine**, With Evana Robotics & Controllers, S/N 25769

**Phase 1 Instruments Pressure Test Stands**

**Precision Instrument Leak & Test Machine**, 5.4L Throttle Body Assy.

**Stauble Machine & Tool/Beach Engineering Leak & Test Machine**, 4.6L Throttle Body Assy., MDL. 25770, S/N 12-94

**Phase 1 Instrument Oil Filter Adapter Assy. & Test Machines**



RSF Tool Inspection System



Cat 50 Tooling



Tombstone Tooling



Key Products Rotary Dial Index Machines



Precision Rotary Dial Index Machines



Stauble PLC Assembly & Test Units



Toyoda Pallets

**LODGING**

**Bay Minette Days Inn**  
1819 Highway 31 South  
Bay Minette, Alabama  
(251) 580-8111

**Bay Inn & Suites**  
1402 Highway 31 South  
Bay Minette, Alabama  
(251) 937-9521

## INSPECTION & QUALITY CONTROL

**Axiom Coordinate Measurement Machine**, MDL. G-80C, S/N 9102, 55" x 72" x 14" Granite Surface, With Renishaw Probe Interface, MDL. P1200, With Renishaw Probe Head Controller, MDL. PHC10-2, LK Pendant Controls

**Varian Heli-Test Kit**, MDL. 9693530, S/N 63646, Compound Sine Plate, Magnetic Chucks

**Dickson Temperature & Humidity Chart Recorders**

**Quincy Lab Oven**, MDL. 10, Mettler Laboratory Scales, MDL. AE200, (2) Submerged Water Test Units

**Evana Robotic Pressure Test Stands**



Axiom Coordinate Measurement Machine



Varian Heli-Test Kit

## CHIP & COOLANT RECYCLING

**D.E. Smith Coolant Filtration & Chip Separation Units**, MDL. LV1518, Uses Media Type Desp-15, 51" x 500 yards, S/N's W-1713, W-1724, W-1725, 1742B, W-1742A

**Barnes Chip Filter/Conveyor Systems**, MDL. RD-112H, S/N's RD-292, RD-202, RD-685, 515, RD 512, RD1616, RD683, RD684, RD-799, MDL. RD-224H, S/N RD-787

**Cincinnati Milacron Coolant Recycle System**, MDL. 400/45, S/N 49407

**Inter-Source Recovery Systems Chip Processing System**, MDL. 35219-D, S/N 5112308, With Hoppers, Auger, Belt Conveyor & Blow System

**Koch Membrane Water Filtration System**, MDL. HF4, S/N C954/1589



D.E. Smith Chip Separator/  
Coolant Recyclers



Cincinnati Milacron Coolant  
Recycle System

## AUTOMATIC PART WASHING SYSTEMS

**CAE Ransohoff Automatic Washing Systems**, With Heater, Reclaim, Filter & Ventilation Systems, 24" Chain Link, Pass Thru, S/N's 3291, H2783, H2785, 2883, H2784.

**CAE Ransohoff Automatic Washing System**, With Heater, Reclaim, Filter & Ventilation Systems, Monorail Type, S/N 3559

## AIR COMPRESSORS & DRYERS

**Quincy Rotary Screw Air Compressor**, MDL. QSF75-100, 75 HP

**Hankinson Refrigerated Air Dryer**, MDL. PR400, S/N 0363-2T-9412-43N

**Hankinson Refrigerated Air Dryer**, MDL. PR1200, S/N 0369-2T-9404-6

**Air Receiver Tanks**

## PLANT SUPPORT EQUIPMENT

**Enerpac Machinery Moving Skates**, MDL. ERS-30

**Enerpac H-Frame Press**, Air/Hydraulic

**Max-Pak Material Baler**, MDL. MP60E, S/N 08952554,

**Aercology Air Filtration System**, MDL. 6000, S/N 57985

**Caterpillar 5,000 Lb Electric Forklift**, With Charger

**Lista Storage Cabinets**

**Spare Parts; Parts Inventory; Electric Pallet Jacks; Pedestal Grinders; Pedestal Fans; Dump Hoppers; Lockers; Storage Cabinets; Office Equipment; Power & Roller Conveyor Units**



CAE Ransohoff Washing Systems



Quincy 75 HP  
Air Compressor



Enerpac Moving  
Skates



Enerpac H-Frame Press



Max-Pak Material Baler

### DIRECTIONS

**From I-65 (Approximately 34 Miles North of Mobile, Alabama):** Exit 34 (Bay Minette/Stockton), south on Highway 59 for 9 miles to Location 1. From Location 1 (Machining) to Location 2 (Foundry) north on Highway 59 for 1.5 miles to Dickman Road. East on Dickman (.5) mile to Nicholville Road. South on Nicholville to sale site. Signs will be posted.



Lista Storage Cabinets



Spare Parts & Components

## FOUNDRY D

### SAND SYSTEM

**Simpson MDL. 22G Multimull Sand Muller**, S/N 9412003, With Water Controls, Dietert Compactability, Bond System, and Related Accessories

**Lot-Sand Hopper**, Sand Distribution Belt, Elevator & Misc. Belt Conveyors

### MOLDING-AUTOMATIC

**Hunter MDL. HMP32C Automatic Molding Machine**, S/N C86D986 With Turntable

**Hunter MDL. HMP32E Automatic Molding System**, S/N C95MPE1100, New 1995, Complete With Feed Belt, Core Setter and Mold Handling Including Accumulating Conveyor, Jacket Shifter, 10 Station Turntable, Bottom Board Return, Hydraulics and Controls

**Didion MDL. RS100 Rotary Shakeout**, S/N DM431, With Variable Speed Drive, 7.5 HP and Gas Fired Blower, 45' Mold Dump Conveyor

### MELTING

**Hi T.E.Q. Melting Furnace**, Gas Fired, Complete

**Hi T.E.Q. Reverboratory Holding Furnace**, Gas Fired, With Advance Automatic Ladler

**Foseco Degasser**, S/N 3028

### CORE DEPARTMENT

**(4) Beardsley & Piper MDL. CBH-184CC Cold Box Core Blowers**, 1990s, Complete With Controls

**(4) Hayman MDL. GPD 330 Mixers**, With Pumps

**(4) Interal MDL. MS1200 Scrubbers and Gaylord Gas Generator System Sand Silo With Fuller Pneumatic Sand Transporter**, S/N 95-60321-170-00, 1995  
**Pulse Type Dust Collector**, Approx. 10,000 CFM (Services Core Room)

### MISCELLANEOUS

**Cork Casting Monorail Chain Conveyor System**, S/N SAC-1, Approx. 6,500', Complete With Hangers and Drive

**Flame Proof Cabinets; Storage Cabinets; 60 HP Pulse Type Dust Collector; Fans; Electrical Disconnects; Etc.**



Simpson Mdl. 22G Multimull Sand Muller (Foundry D)  
Dietert Compactability Controller w/Panel



Hunter Mdl. 32E Turntable



Didion Mdl. RS100 Rotary Shakeout (Foundry D)



Foseco Degasser



Beardsley & Piper Mdl. CBH-184CC Cold Box Core Blowers



Cork Casting Monorail Chain Conveyor System



**TO SCHEDULE AN AUCTION OR APPRAISAL, CALL (818) 508-7034**

## NORTH FOUNDRY

### SAND SYSTEM

**Simpson MDL. 22G Multimull Sand Muller**, 1990s, With Water Controls, Dietert Compactability, Bond System, and Related Accessories

**Sand Hopper With Rotary Screen**, Sand Distribution Belt, Elevator, Sand Return Belt

**Conveyor and Assorted Sand Belts**

### MOLDING-AUTOMATIC

**Hunter MDL. HMP20D Automatic Molding System**, S/N A94MPD1075, New 1994, Complete With Feed Belt, Core Setter and Mold Handling Including Accumulating Conveyor, Jacket Shifter, 40 Station Turntable, Bottom Board Return, Hydraulics and Controls

**(2) Vulcan Mold Handling Systems**, New 2002, Complete With Mold Elevator, Jacket Shifter, Mold Shifter, Hydraulics and Hunter Turntables

**(2) Feed Belt Conveyors**, Fed (2) Disamatic Molding Machines

**(3) General Kinematics Mold Dump Conveyors**

**General Kinematics 4' x 18' Shakeout**, With Drive

### MELTING

**(2) Hi T.E.Q. Reverberatory Melting Furnaces**, With Pressure Pour Furnace and Misc.

**Hi T.E.Q. Crucible Holding Furnaces**, With Controls

### MISCELLANEOUS

**Goff MDL. 3 Cu. Ft. Blast Machine**, Rubber Belt, With Dust Collector, Fans, Warming Chamber for Core Carts, Etc.

**Truck Scale**, 60 Ton Capacity, With Scale



Hunter Mdl. HMP20D Automatic Molding System



Vulcan Mold Handling Systems (North Foundry)



General Kinematics Mold Dump Conveyors



General Kinematics 4' x 18' Shakeout



Hi T.E.Q. Reverberatory Melting Furnaces

**WEBCAST**

Can't make it to the auction in person?  
Bid live online at  
[www.BIDITUP.com](http://www.BIDITUP.com)

## SOUTH FOUNDRY

### SAND SYSTEM

**Simpson MDL. 22G Multimull Sand Muller (Incomplete)**, With Bond System  
**Sand Hopper**, Distribution Belt, Elevators & Misc. Return Belts

**Didion MDL. RS100 Rotary Shakeout**, S/N DM172, With Variable Speed Drive, (2)  
Carrier Vibrating Feed Conveyors, MDL. FC60-360, 1999, 10' Sand Feed Belt

### MOLDING-AUTOMATIC

**Hunter MDL. HMP20E Automatic Molding Machine**, S/N A96MPD1123, New 1996  
(Missing Table & Cylinder), Core Setter, Bottom Board Return and Turntable

### MELTING

(4) Reverboratory Furnaces and Foseco DeGasser

### CORE ROOM

**Sutter MDL. 3050 Cold Box Core Blower**, PLC Controls, Complete With Core Belt,  
Omco Mixer and Interl MDL. 1200 Scrubber

**Sutter 36" x 60" Cold Box Core Blower**, Controls, Complete With Omco Mixer  
and Scrubber

**Osborn MDL. C40 Cold Box Core Blower**, Controls and Osborn Mixer

**Gaylord Gas Generator System**

**Sand Silo With Dependable Fordath Pneumatic Sand Transporter**

### PERMANENT MOLDING

**Guide Engineering 8 Station Turntable**, Hydraulic, Unloading Stations With Spares  
and Cooling Conveyor, New 1999

### HEAT TREAT

**Lindberg MDL. 73SH-484848-12 Annealing Furnace**, 96 KW, 1,250 Deg. F, S/N 25967

### DIE CASTING BUILDING

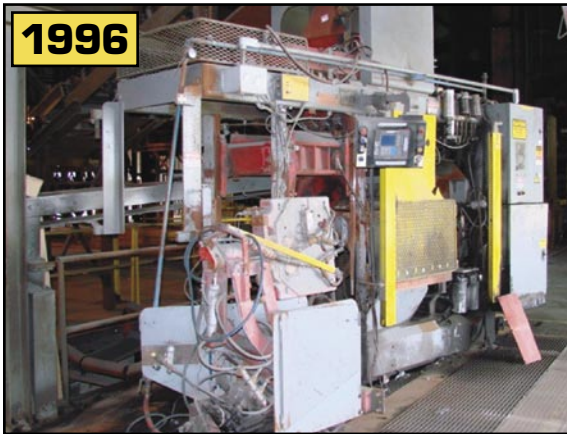
**UBE New Rheo Casting System**, MDL. NRC-800, Complete With MDL. HVSC 800 PL  
Squeeze Casting Machine, PLC Controls, MDL. RRS-8 Slurry Producing Equipment  
With Controls, Hi T.E.Q. Electric Crucible Furnace, S/N 3016, With Controls and UBE  
Automatic Ladler, VERY LATE

**Crane Mann 7.5 Ton Bridge Crane**, 8 Way Pendant Controls, 30' Span, 25' Lift Height,  
With 60' Free Standing Craneway (Like New!)



Didion Mdl. RS100  
Rotary Shakeout  
(South Foundry)

<  
Carrier Vibrating  
Feed Conveyor



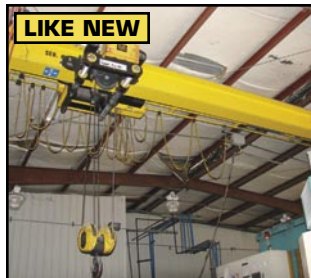
1996  
Hunter Mdl. HMP20E Automatic Molding Machine  
(South Foundry)



Sutter Mdl. 3050 Cold Box Core Blower



Guide Engineering 8 Station Turntable



LIKE NEW  
Crane Mann 7.5 Ton Bridge Crane



UBE New Rheo Die Casting System

**LEASE/FINANCING  
AVAILABLE DIRECT FROM  
BIDITUP Capital Corporation**

### SOUTH FOUNDRY, cont.

#### MISCELLANEOUS

Louis Small Brinell Tester; Tinius Olsen Tensile Tester; Miller Welder; Pantak X Ray Unit, 1999; (2) Blow LTD Hydraulic Presses; Approx. 150 Ton Capacity; 3" Horizontal Belt Grinders; Harrington 5T Electric Hoist; Jib Cranes; Starrett MDL. R08-4040-24 CMM Machine; Etc.



Tinius Olsen Tensile Tester



Spare Parts



Spare Parts

#### SPARE PARTS ROOM

Pallet Racks; Storage Cabinets; Hydraulic Pumps; Valves; Drives; Motors; Hoses; Sprockets; Bearings; Housings; Bushings; Electrical; Cold Saw Blades Crucible Liners; Etc.

#### CORE KNOCKOUT & PROCESSING

(5) Fataluminum Core Knockout Machines, PLC Controls, Late, Spares

(9) Herschel Core Knockout Machines, Single Station, Double Station, and Triple Station

Tannewitz 36" Vertical Band Saw; (4) DoAll MDL. ZV3620 36" Vertical Band Saws

Wheelabrator US Filter 12 Cu. Ft. Tumbblast Machine, Rubber Belt, S/N A1424503, With Loading Belt & Discharge Belt, Wheelabrator Pulse Type Dust Collector, LATE

(3) Goff MDL. 6BB Blast Machines, 6 Cu. Ft., Rubber Belt, With Dust Collector, 1990s

Production & Equipment 6 Station Automatic Hydraulic Saw, 1997, 10 Station Hydraulic Saw & 12" Hydraulic Saw With Infeed Conveyor

Imprex MDL. PG-504 Impregnation System, S/N 8073, With Autoclave, Rinse Tanks, Cure Tanks, and Temperature Controls

(3) Quincy MDL. QSI 370 Rotary Screw Air Compressors, Water Cooled

(3) Air Dryers, Air Storage Tank, and Air Receivers

(6) Greenard MDL. HPV-15 Hydraulic Presses, 20 Ton, 1999, Max 24" Disc & Grinder, 3" Back Stand Grinder

Magnaflux, Complete With LP Gas Heater and Conveyor



Starrett CMM Machine



Wheelabrator US Filter 12 Cu. Ft.



Goff Mdl. 6BB Blast Machine



Goff Mdl. 6BB Blast Machine



Greenard Mdl. HPV-15 Hydraulic Presses

#### RECLAMATION

Approx. 200' Belt Conveyor, Carrier Vibrating Conveyor, Didion MDL. RS 40 Rotary Shakeout, Elevator and Sand Storage Silo

#### ROLLING STOCK

Caterpillar 10,000 Lb Forklift, Triple Mast

Waldon Front End Loader

(2) 40' Box Trailers

Misc. Pallet Jacks



Magnaflux System



Imprex Mdl. PG-504 Impregnation System



Didion Mdl. RS40 Rotary Shakeout, Carrier Vibrating Conveyor



Caterpillar 10,000 Lb Forklift



Waldon Front End Loader



(2) 40' Box Trailers

**LIVE  
ON-SITE &  
WEBCAST**

# MACHINERY AUCTION

**MAY 22, 2007**

**CITATION**  
*Innovative Metal Components*

**— CITATION CORPORATION —**  
*State-of-the-Art Aluminum Automotive  
 Foundry & Late Model CNC Machining Facility*

**AUCTION**

Tuesday, May 22, 2007  
 Beginning at 9:00 A.M. CDT

**PREVIEW**

Monday, May 21, 2007  
 9:00 A.M. to 4:00 P.M. CDT

**LOCATION 1**

2440 South US Hwy. 31  
 Bay Minette, Alabama 36507

**LOCATION 2**

43575 Nicholsville Road  
 Bay Minette, Alabama 36507

See Pages 2 and 3 for Directions & Lodging

**FOR THE COMPLETE TERMS & CONDITIONS OF THIS AUCTION**  
 Please visit our website — [www.BIDITUP.com](http://www.BIDITUP.com) and click on **CITATION CORPORATION**

**NOW OFFERING IN-HOUSE FINANCING & LEASING. Call 818.508.7034**

**FEATURED AUCTION**

Tuesday, May 22, 2007  
 Bay Minette, Alabama

**CITATION  
 CORPORATION**

State-of-the-Art Aluminum  
 Automotive Foundry & Late Model  
 CNC Machining Facility



Hunter Mdl. HMP32E  
 Automatic Molding System



Hunter Mdl. HMP20D  
 Automatic Molding System



Hunter Mdl. HMP20E  
 Automatic Molding Machine



Toyoda 4-Axis Machining  
 Center

11426 Ventura Boulevard  
 Studio City, California 91604  
 Phone: 818.508.7034  
 Fax: 818.508.3025  
 info@biditup.com  
 Chip Pearce, Auctioneer, Alabama LIC 1088

**MACHINERY AUCTION, LOOK INSIDE!**

**ATTENTION: PLANT MANAGER  
 OR EQUIPMENT BUYER**

Presorted  
 First Class Mail  
 U.S. Postage  
 PAID  
 Eugene, Oregon  
 Permit No. 305

For a Complete Listing of Upcoming Auctions  
 Visit [www.BIDITUP.com](http://www.BIDITUP.com). Register Online and Receive  
 Auction Updates & Information via E-mail.



**WEBCAST**

Can't attend the auction in person? You can participate and bid in real time via the Internet. Preview assets with detailed digital photos, lot catalogs, and in-depth descriptions.

For more information, visit [www.BIDITUP.com](http://www.BIDITUP.com)

Please note, all webcast participants must submit a 25% deposit and signed registration forms no later than 24 hours before a sale.